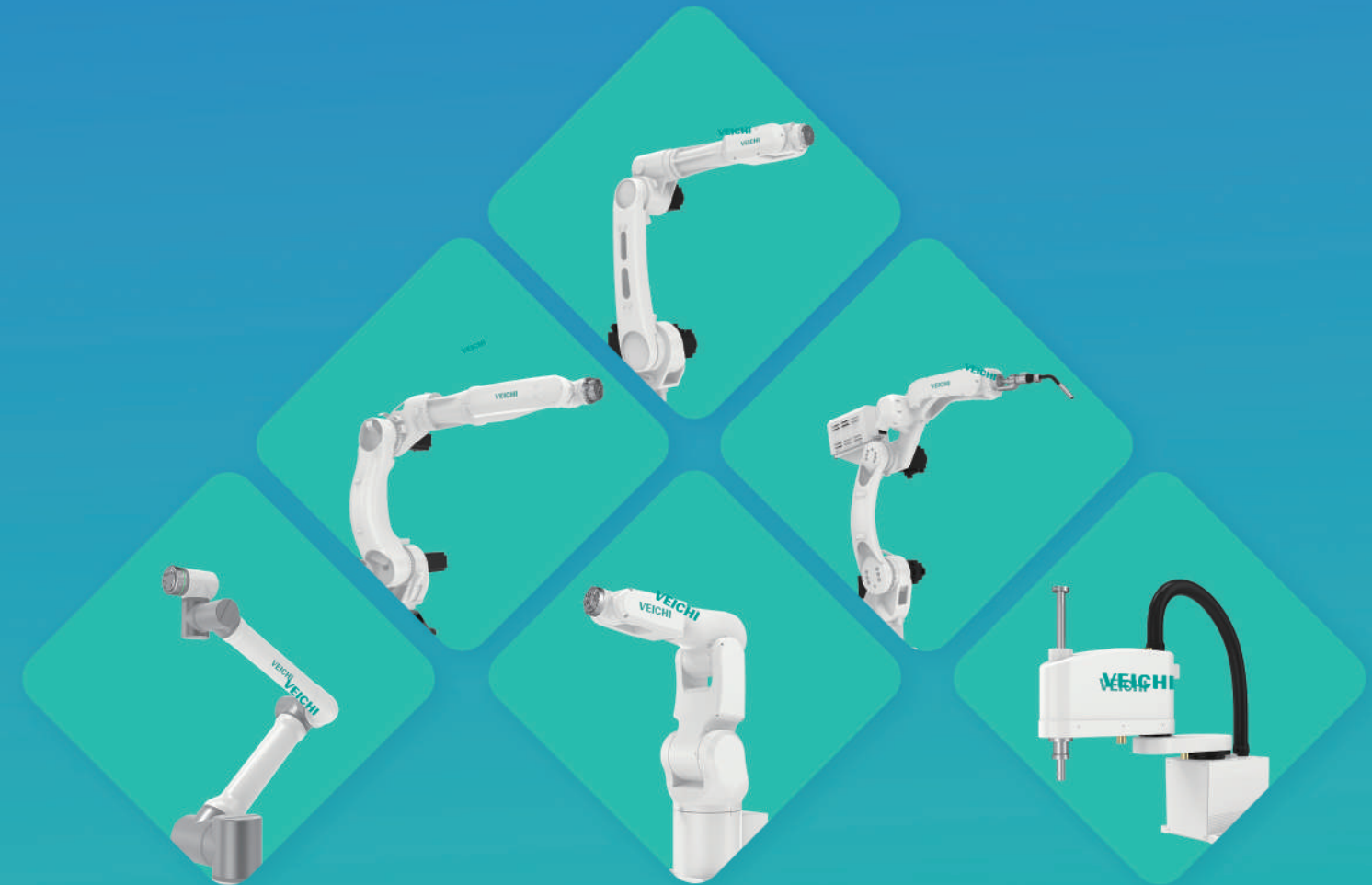


VEICHI

DRIVE FOR EVER



VEICHI

Suzhou Veichi Electric Co.,Ltd.

No.1888 Songwei Road, Guoxiang Street, Wuzhong Economic and Technological Development Zone, Suzhou, Jiangsu Province, China.

Tel:+86-512-6617 1988 Fax:+86-512-6617 3610

Facebook: <https://www.facebook.com/veichigroup>

WhatsApp:+86-138 2881 8903 <https://www.veichi.org>



Official Website

*Version: Y5/2-11

Information in this manual is subject to change without notice.
Copyright © Veichi Electric. All rights reserved. Unauthorized reproduction prohibited.

www.veichi.com



Company Profile

Veichi Electric (Stock Code: 688698) specializes in electrical transmission and industrial control, operating as an integrated high-tech enterprise in R&D, production, and sales of industrial automation products. With a vision to lead in smart industry and green energy solutions, the company leverages its R&D and manufacturing hubs in Suzhou, additional R&D centers in Shenzhen and Xi'an, and wholly-owned subsidiaries overseas, consistently serving customers worldwide with competitive and reliable solutions.

Under the "One Core, Two New Drivers" strategy, Veichi focuses on industrial automation, offering AC drives, servo systems, and control systems widely applied across heavy and light industries, as well as high-end equipment sectors, supporting the digital and intelligent transformation of manufacturing with its tailored solutions. Simultaneously, in two emerging fields, it provides one-stop solutions for humanoid, collaborative, and mobile robots in embodied intelligence, while in green energy, it delves into segments like photovoltaic, energy storage, and hydrogen energy, to "connect every device with green power," fostering a synergistic growth between core operations and new ventures.

Sustained R&D has yielded a portfolio of proprietary patented technologies including silicon carbide application, HF injection, motor controls and protections (auto-tuning, flying-start, high-speed flux-weakening, V/F control, vector control), high-density water-cooling layout, and IGBT drive protection. As of September 30, 2025, Veichi holds 234 patents, with 66 for invention.

Over two decades of steady growth, Veichi has earned numerous certifications and accolades from national and regulatory authorities, including "High-Tech Enterprise," "Postdoctoral Research Workstation," and provincial honors like "Engineering Technology Research Center," "Enterprise Technology Center," and "Industrial Internet Development Demonstration Enterprise (Benchmark Factory Category)."

Guided by its mission to "Drive Smart Industry, Co-create a Green Future," Veichi will continue to intensify R&D and advance into high-performance, high-reliability fields to propel global progress.

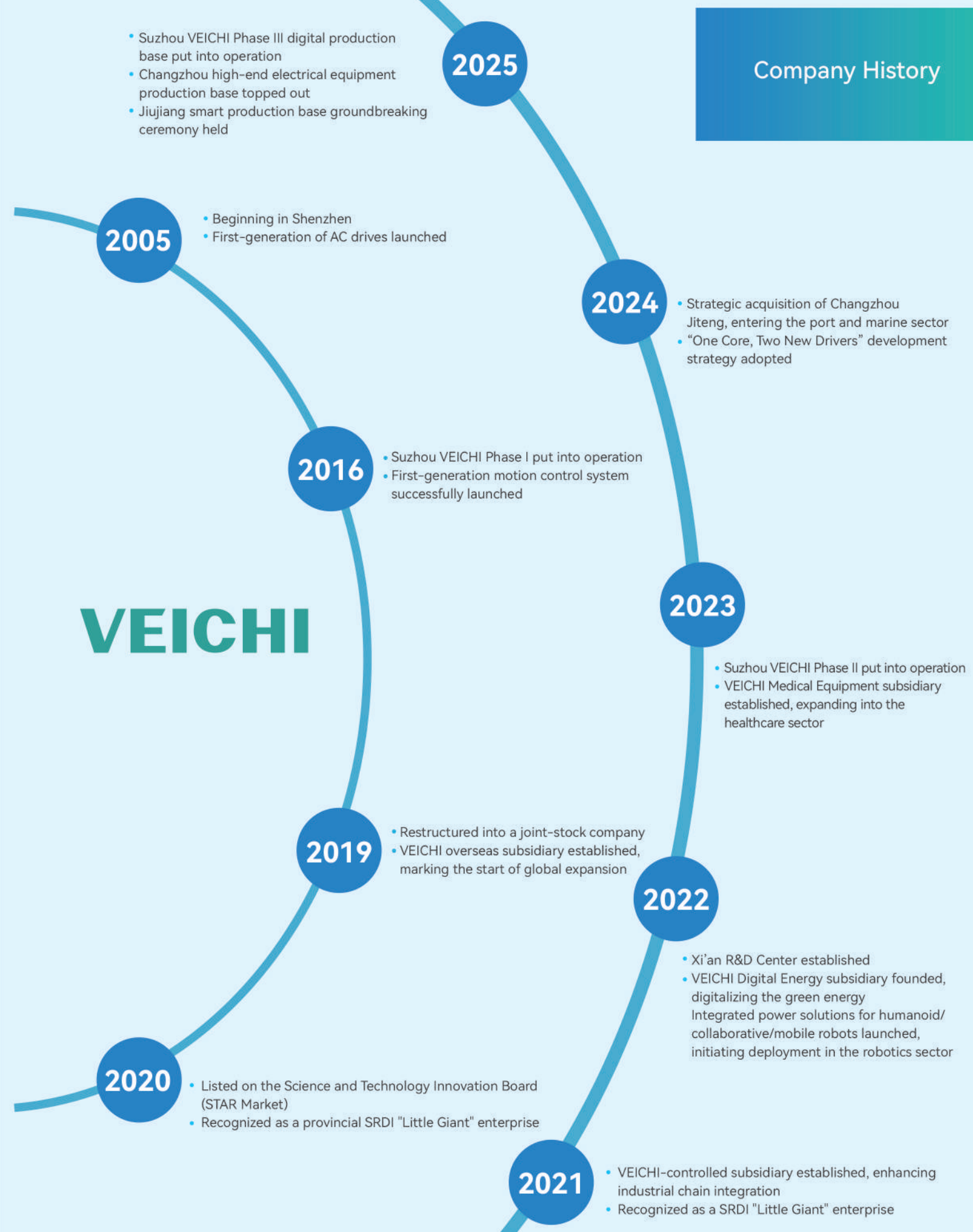


Company Honors



Company History

VEICHI



The Robot Industry Experts

VEICHI gathers wisdom from three parties, actively leveraging their core technological advantages in the research and development and manufacturing of key components. With "robot joint modules" as their main business, we integrate resources from three parties to closely grasp customer needs, and develop more competitive robot joint module products to quickly capture market share and inject new momentum into the development of the robotics industry.

Talent

Outstanding professional technical talents in the domestic industrial control field gather here. Currently, R&D personnel account for 37.16% of the total number of employees, and technical personnel with undergraduate degrees and above account for 74.62%.

R&D Philosophy

Abide by the R&D philosophy of "technological innovation for higher excellence", and customer needs, VEICHI serves with better products and technologies.

R&D Achievements

As of September 30, 2025, Veichi holds 234 patents, with 66 for invention, mainly in the fields of electrical drive, industrial control, green energy, and industrial automation equipment are granted.

Partners

In-depth cooperative relationships with many famous domestic colleges and research institutions are set up, e.g. "Jiangsu Province Postdoctoral Innovation Practice Base" and "Jiangsu Province Graduate Student Workstation," continuously launching specialized product series with distinctive features.

R&D Investment

Veichi invests 10% of its operating income in R&D annually. It has established a 3-meter anechoic chamber, climate environment lab, temperature and vibration lab, full power range electric drive performance lab, and several industrial application platforms to enhance product performance, quality and reliability.

R&D Pattern

EDA (Electronic Design Automation), which includes theoretical design, followed by simulation verification (thermal simulation, circuit simulation, code simulation), and then prototype testing, and IPD (Integrated Product Development), which features efficiency and collaboration are adopted.

Selection Table

Page01-04

1. Scara Robots

Page05-12

VCSG030-500	05	VCSG100-700	06
VCSH030-Optional Length	07	VCSH100-Optional Length	08
VCSH200-1200	09	VCSH500-1200	10
VCSW030-Optional Length	11	VCSW060-Optional Length	12

2. Collaborative Robots

Page13-17

VCC03-580	13	VCC05-900	14	VCC10-1310	15
VCC20-1650	16	VCC30-1800	17		

3. Vertical Polyarticulated Robots

Page25-41

■ Welding Robots

Page25-27

VCR06-1410	25	VCR10-1450	26
VCR06-2070	27		

■ General Robots 6-axis

Page18-23, Page27-34

VCR01-370	18	VCR03-610	19	VCR06-720	20
VCR07-910	21	VCR07-960	22	VCR07-1010	23
VCR10-1110	24	VCR12-1410	28	VCR20-1720	29
VCR20-1920	30	VCR30-1720	31	VCR30-1920	32
VCR60-2110	33	VCR70-2110	34	VCR50-2440	35
VCR210-2700	36	VCR155-3200	37		

■ General Robots 4-axis

Page38-41

VCP30-1840	38	VCP12-1430	39
VCP120-3200	40	VCP180-3200	41

4. Accessory

Page42-47

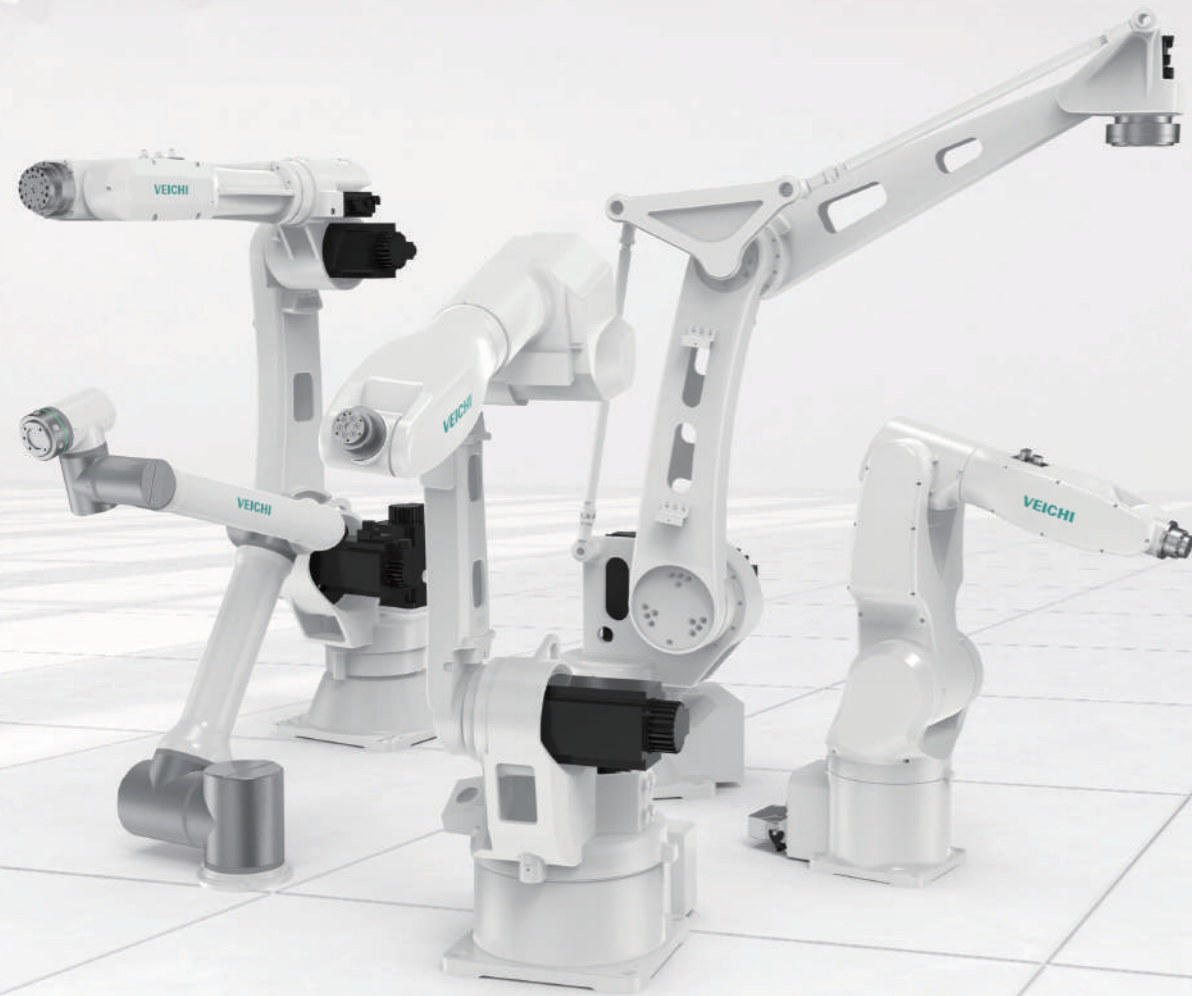
VCRP04 示教器	42	VCRC04-A3 控制柜	43
VCRC05-B6 控制柜	44	VCRC05-G6 控制柜	45
VCRC03-C6 控制柜	46	VCRC03-D6 控制柜	47

5. Application Scenario

Page48-53

VEICHI

Empowering the robotics industry with competitive and self-controlled solutions



Model Description

SCARA Robots

VCSH 030 - 500 - T0 - CE

VCSH: SCARA robot, H series
VCSW: SCARA robot, W series
VCSG: SCARA robot, G series (ceiling-mounted)

Payload
030=3kg, 100=10kg

Reach
500=500mm, 1000=1000mm

Certification
CE: CE-certified (export version)
Blank: China domestic version

Configuration
T0: Standard (with teach pendant)
T1: Without teach pendant (sold separately)
D: Custom (as per order)
Blank: Standard (with teach pendant)

Industrial & Collaborative Robots

VCC 05 - 900 - T0 - CE

VCC: 6-axis collaborative robot
VCR: 6-axis industrial robot
VCP: 4-axis industrial robot

Payload
03=3kg, 20=20kg, 155=155kg

Reach
900=900mm, 3200=3200mm

Certification
CE: CE-certified (export version)
Blank: China domestic version





Configuration
T0: Standard (with teach pendant)
T1: Without teach pendant (sold separately)
D: Custom (as per order)
Blank: Standard (with teach pendant)

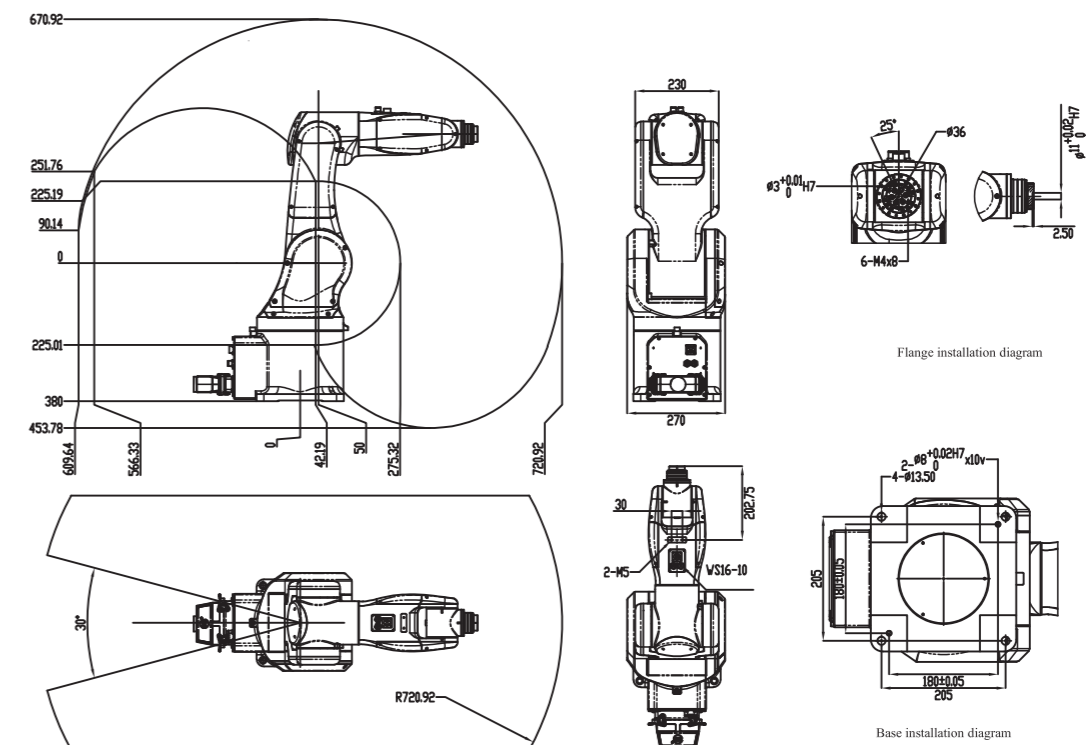
Quick Selection Table

Quick Selection Table

Product				
Model	VCSG030-500	VCSG100-700	VCSH030-reac	VCSH100-reach
Payload	3kg	10kg	3kg	10kg
Beam Length	500mm	700mm	400/500/600mm	800/900/1000mm
Protection Level	IP40	IP40	IP40	IP40
Moment of Inertia	0.05kg*m ²	0.3kg*m ²	0.05kg*m ²	0.3kg*m ²
Position Repeat Accuracy	J1/J2	±0.01mm	±0.02mm	±0.01mm
	J3	±0.01mm	±0.01mm	±0.01mm
	J4	±0.01°	±0.01°	±0.01°







Product					
Model	VCC03-580	VCC05-900	VCC10-1310	VCC20-1650	VCC30-1800
Payload	3kg	5kg	10kg	20kg	30kg
Beam Length	585mm	900mm	1310mm	1650mm	1800mm
Protection Level	IP54/IP67	IP54/IP67	IP54/IP67	IP54	IP54
Position Repeat Accuracy	±0.03mm	±0.03mm	±0.05mm	±0.1mm	±0.1mm

Product				
Model	VCSH200-1200	VCSH500-1200	VCSW030-reach	VCSW060-reach
Payload	20kg	50kg	3kg	6kg
Beam Length	1200mm	1200mm	500/600mm	500/600/700mm
Protection Level	IP40	IP40	IP40	IP40
Moment of Inertia	2.45kg*m ²	4.35kg*m ²	0.05kg*m ²	0.05kg*m ²
Position Repeat Accuracy	J1/J2	±0.05mm	±0.05mm	±0.01mm
	J3	±0.02mm	±0.02mm	±0.01mm
	J4	±0.005°	±0.005°	±0.01°








Quick Selection Table

Product						
Model	VCR01-370	VCR03-610	VCR06-720	VCR07-910	VCR07-960	VCR07-1010
Payload	1kg	3kg	6kg	7kg	7kg	7kg
Beam Length	370mm	616mm	720mm	910mm	960mm	1010mm
Protection Level	IP54	IP54	IP54/IP67 (5/6-axis optional)	IP54/IP67	IP54/IP67 (5/6-axis optional)	IP54/IP67 (5/6-axis optional)
Position Repeat Accuracy	±0.01mm	±0.02mm	±0.02mm	±0.02mm	±0.04mm	±0.04mm

Product						
Model	VCR10-1110	VCR06-1410	VCR10-1450	VCR06-2070	VCR12-1410	VCR20-1720/1920
Payload	10kg	6kg	10kg	6kg	12kg	20kg
Beam Length	1110mm	1412mm	1455mm	2078mm	1410mm	1721/1920mm
Protection Level	IP54	IP54/IP67 (5/6-axis optional)	IP54	IP54	IP54/IP67 (5/6-axis optional)	IP54/IP67 (5/6-axis optional)
Position Repeat Accuracy	±0.03mm	±0.05mm	±0.05mm	±0.07mm	±0.06mm	±0.05mm

Quick Selection Table

Product					
Model	VCR30-1720	VCR30-1920	VCR60-2110 VCR70-2110	VCR50-2440	VCR210-2700
Payload	30kg	30kg	60/70kg	50kg	210kg
Beam Length	1721mm	1920mm	2119mm	2448mm	2700mm
Protection Level	IP54/IP67 (5/6-axis optional)	IP54/IP67 (5/6-axis optional)	IP54	IP54	IP54/IP65 (5/6-axis optional)
Position Repeat Accuracy	±0.05mm	±0.05mm	±0.08mm	±0.08mm	±0.1mm

Product					
Model	VCR155-3200	VCP30-1840	VCP12-1430	VCP120-3200	VCP180-3200
Payload	155kg	30kg	12kg	120kg	180kg
Beam Length	3200mm	1840mm	1435mm	3200mm	3200mm
Protection Level	IP54/IP65 (5/6-axis optional)	IP54	IP54	IP54/IP65 (4-axis optional)	IP54/IP65 (4-axis optional)
Position Repeat Accuracy	±0.1mm	±0.08mm	±0.08mm	±0.1mm	±0.1mm

VCSH030-Optional Length

Payload: 3kg
Length: 400/500/600mm



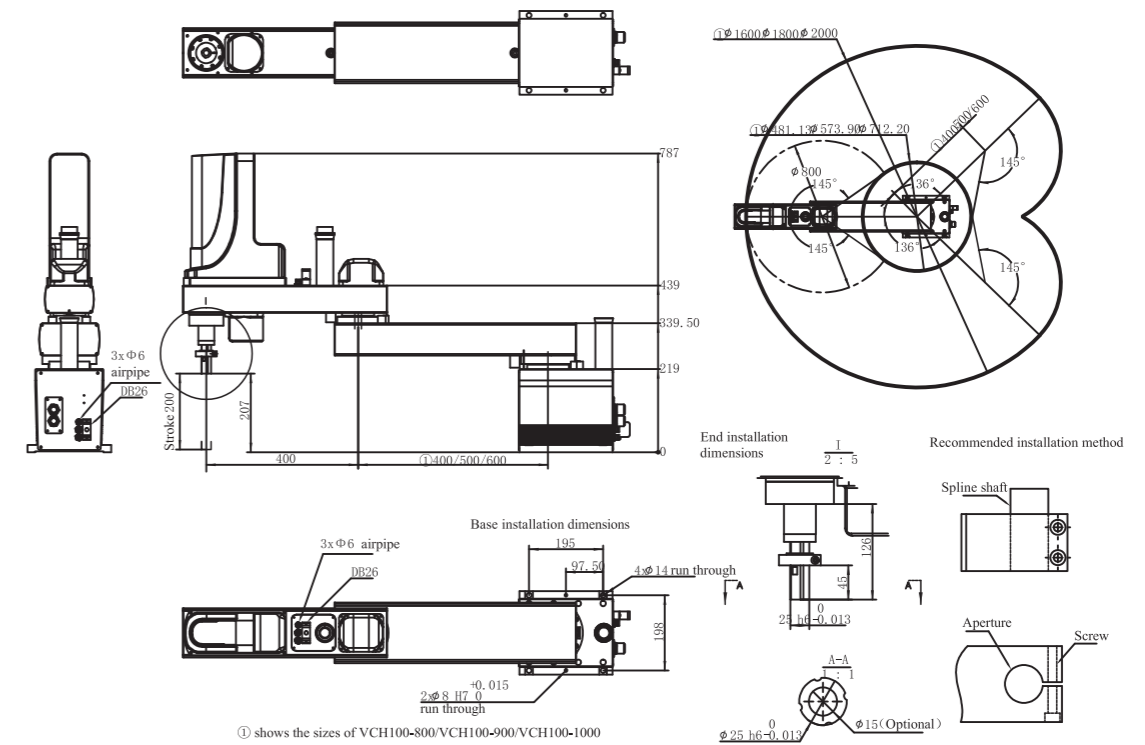
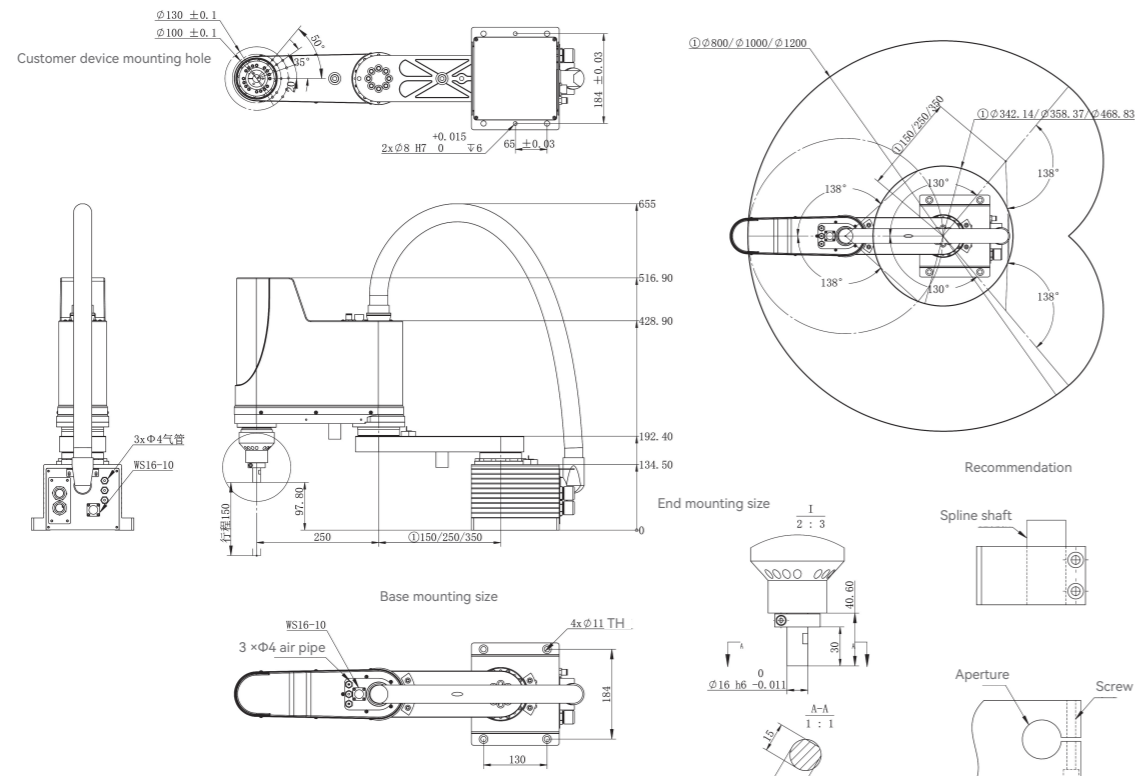
Specification	Length(mm)	J1			J2	J3	R
		VCSH030-400	VCSH030-500	VCSH030-600	250	150	-
Rotation Range (°)		130	138	-	360		
		-130	-138	-	-360		
Reducer Mechanism	Reducer	Harmonic drive			Harmonic drive	-	Harmonic drive
	Conductivity	Motor-Reducer	Direct connection			-	Synchronous belt pulley
		Reducer-Output			Direct connection		
Position Repeat Accuracy(XYZ: mm)(r:°)※		±0.01			±0.01	±0.01	
Max Speed (XYZ:mm/sec)(r: °/s)		6280/7065/7850			1000	720	
Rated Load(kg)					3kg		
Standard Cycle Time: 1kg Handling Time (sec)					0.4		
R-axis Moment of Inertia(kgm2)					0.05		
I/O					0.2*10		
User Pipe (inside)					Φ4*3		
Robotics Cable Length (m)					Standard: 3 Optional: 5		
Body Weight(kg)					16.8/17.9/19kg		
Controller					VCRC04-A3		
Operating Temperature					0-45°C		

VCSH100-Optional Length

Payload: 10kg
Length: 800/900/1000mm



Specification	Length(mm)	J1			J2	J3	R
		VCSH100-800	VCSH100-900	VCSH100-1000	400	200	-
Rotation Range (°)		136	145	-	360		
		-136	-145	-	-360		
Reducer Mechanism	Reducer	Harmonic drive			Harmonic drive	-	Harmonic drive
	Conductivity	Motor-Reducer	Direct connection			-	Synchronous belt pulley
		Reducer-Output			Direct connection		
Position Repeat Accuracy(XYZ: mm)(r:°)※		±0.02			±0.01	±0.01	
Max Speed (XYZ:mm/sec)(r: °/s)		11304/12089/12874			1000	720	
Rated Load(kg)					10kg		
Standard Cycle Time: 1kg Handling Time (sec)					0.6		
R-axis Moment of Inertia(kgm2)					0.3		
I/O					0.2*20		
User Pipe (inside)					Φ6*3		
Robotics Cable Length (m)					Standard: 3 Optional: 5		
Body Weight(kg)		46kg	48kg	50kg			
Controller					VCRC04-A3		
Operating Temperature					0-45°C		



VCSW030-Optional Length

Payload: 3kg
Length: 500/600mm



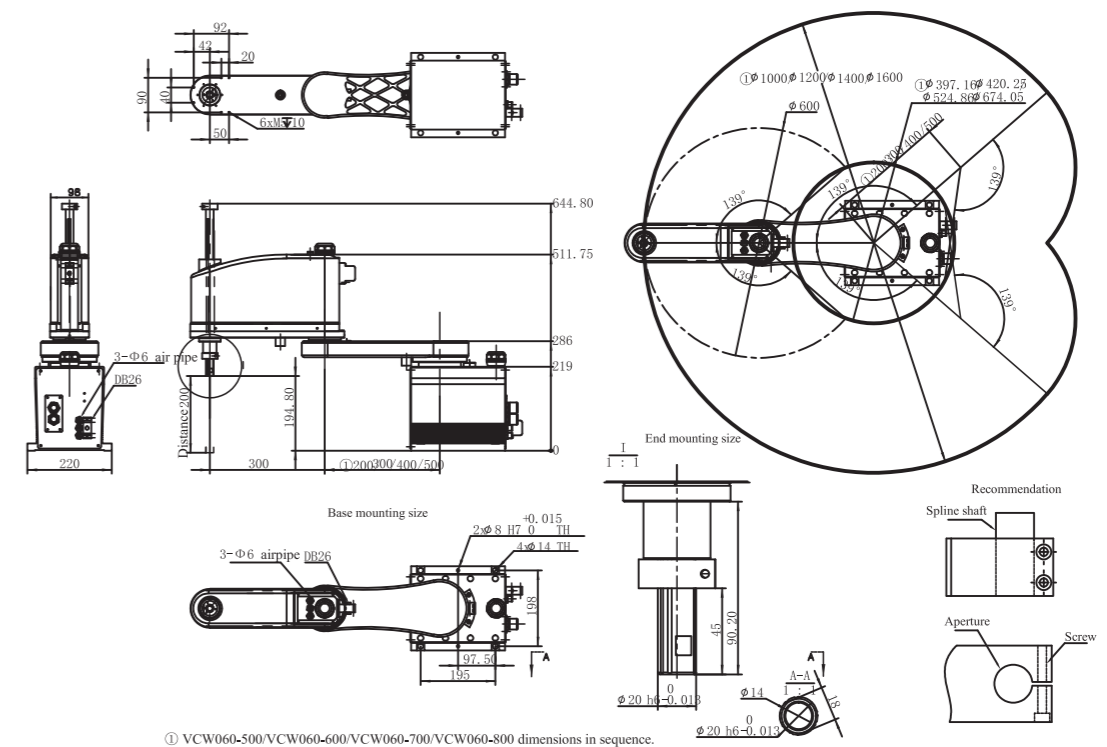
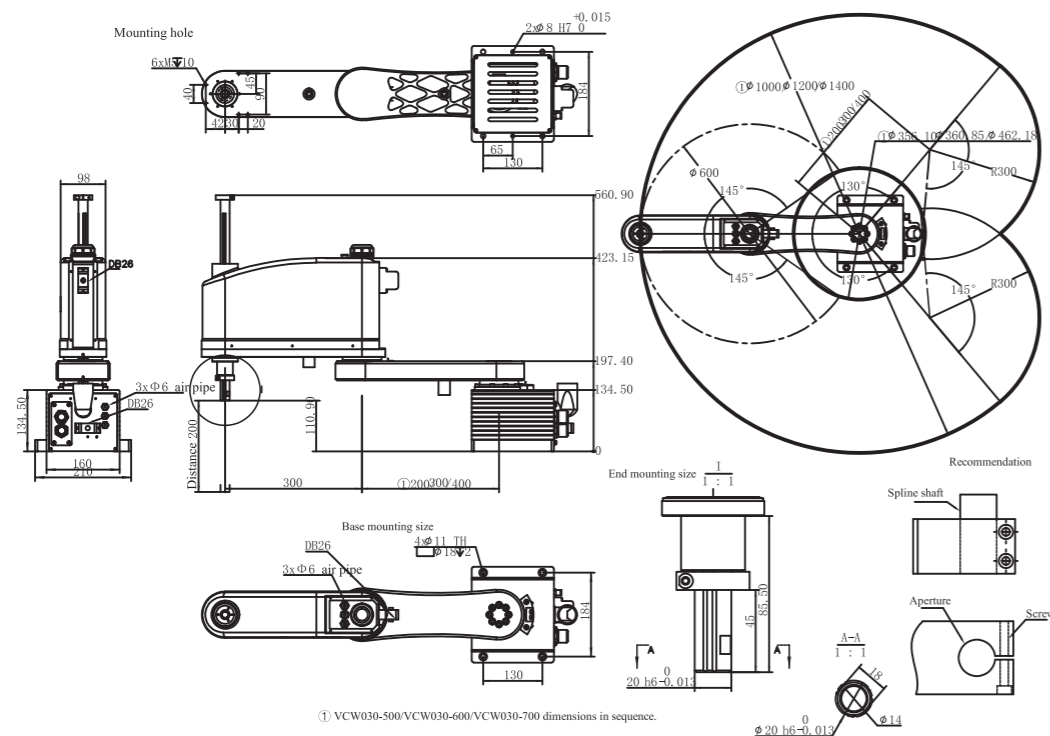
Specification	Length(mm)	J1		J2	J3	R
		VCSW030-500	VCSW030-600	300	200	-
Rotation Range (°)		130		145	-	360
		-130		-145		-360
Reducer Mechanism	Reducer	Harmonic drive		Harmonic drive	-	Harmonic drive
	Conductivity	Motor-Reducer	Direct connection		-	Synchronous belt pulley
Position Repeat Accuracy(XYZ: mm)(r:°) ※		±0.01		±0.01	±0.01	
Max Speed (XYZ:mm/sec)(r: °/s)		7693/8478		1000	3500	
Rated Load(kg)		3kg				
Standard Cycle Time: 1kg Handling Time (sec)		0.4				
R-axis Moment of Inertia(kgm2)		0.05				
I/O		0.2*10				
User Pipe (inside)		Φ6*3				
Robotics Cable Length (m)		Standard: 3 Optional: 5				
Body Weight(kg)		20/25kg				
Controller		VCRC04-A3				
Operating Temperature		0-45°C				

VCSW060-Optional Length

Payload: 6kg
Length: 500/600/700mm



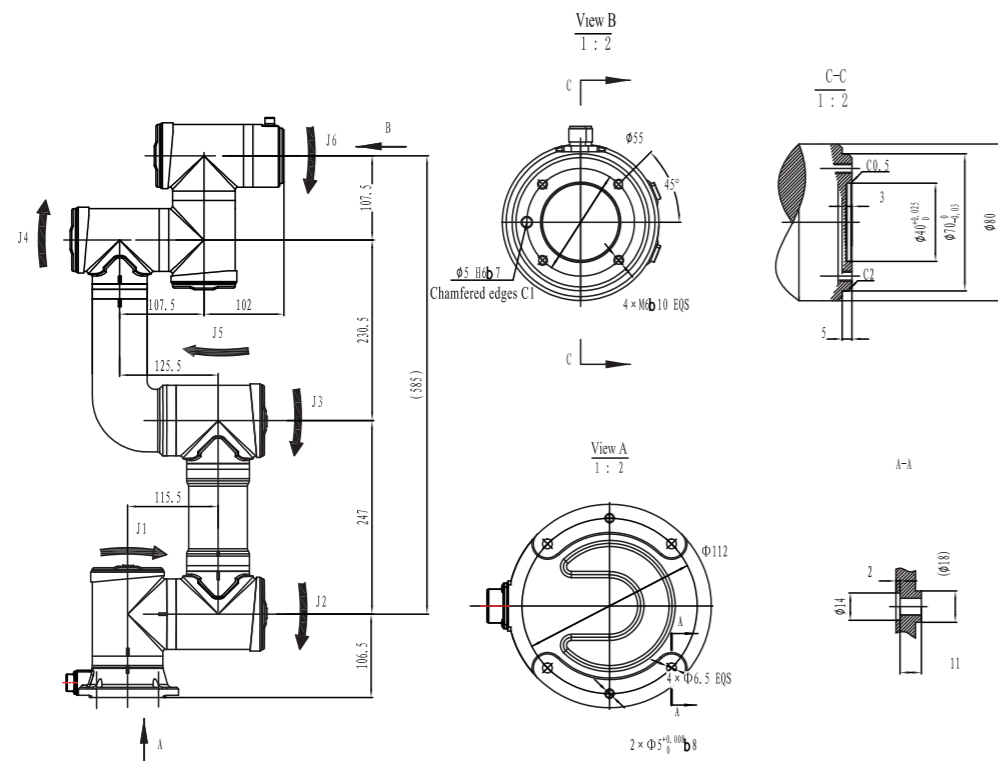
Specification	Length(mm)	J1			J2	J3	R
		VCSW060-500	VCSW060-600	VCSW060-700	300	200	-
Rotation Range (°)		139		139	-	360	
		-139		-139		-360	
Reducer Mechanism	Reducer	Harmonic drive			Harmonic drive	-	Harmonic drive
	Conductivity	Motors-Reducer	Direct connection		-	Synchronous belt pulley	
Position Repeat Accuracy(XYZ: mm)(r:°) ※		±0.02			±0.01	±0.01	
Max Speed (XYZ:mm/sec)(r: °/s)		7693/8478/9263			1000	3500	
Rated Load(kg)		6kg					
Standard Cycle Time: 1kg Handling Time (sec)		0.4					
R-axis Moment of Inertia(kgm2)		0.05					
I/O		0.2*10					
User Pipe (inside)		Φ6*3					
Robotics Cable Length (m)		Standard: 3 Optional: 5					
Body Weight(kg)		37.5/40/42kg					
Controller		VCRC04-A3					
Operating Temperature		0-45°C					



VCC03-580

Payload: 3kg
Length: 585mm

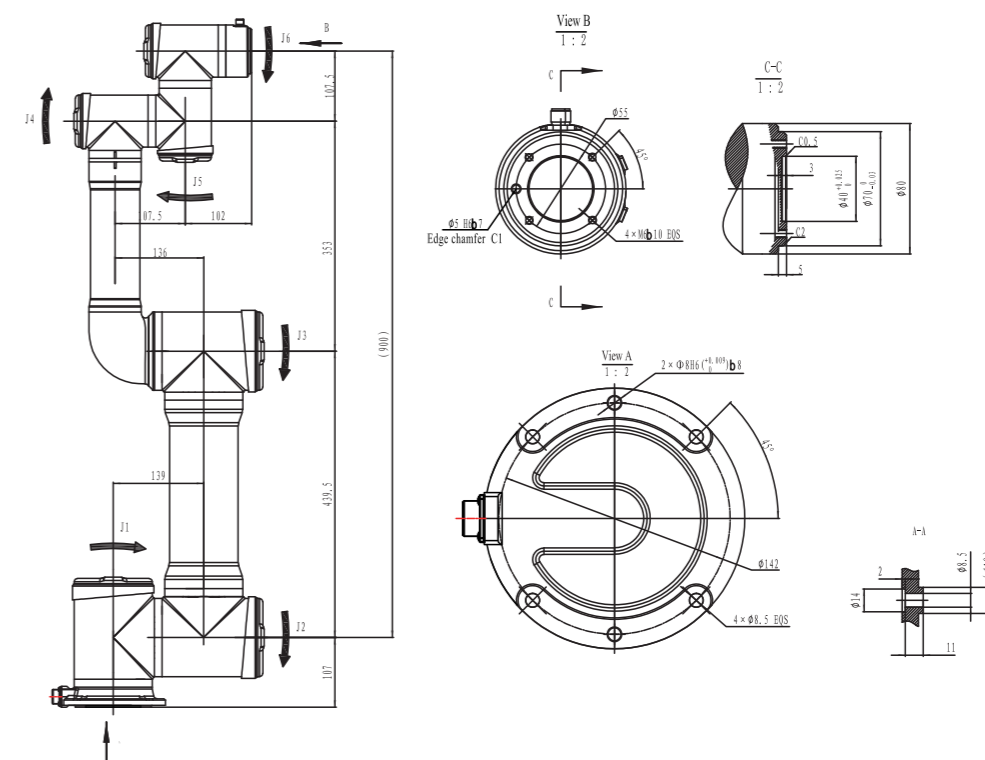
Model	VCC03-580	
Payload	3kg	
Max Working Radius	585mm	
Body Weight	16kg	
Rated Power	0.9kw	
Max Speed	J1	180° /s
	J2	180° /s
	J3	180° /s
	J4	180° /s
	J5	180° /s
	J6	180° /s
Max Operation Area	J1	±175°
	J2	±175°
	J3	-240° ~ +60°
	J4	±175°
	J5	±175°
	J6	±360°
Protective Specification	IP54/IP67	
Position Repeat Accuracy ※	±0.03mm	
Working Temperature	0~45°C	
Controller	VCRC05-G6	



VCC05-900

Payload: 5kg
Length: 900mm

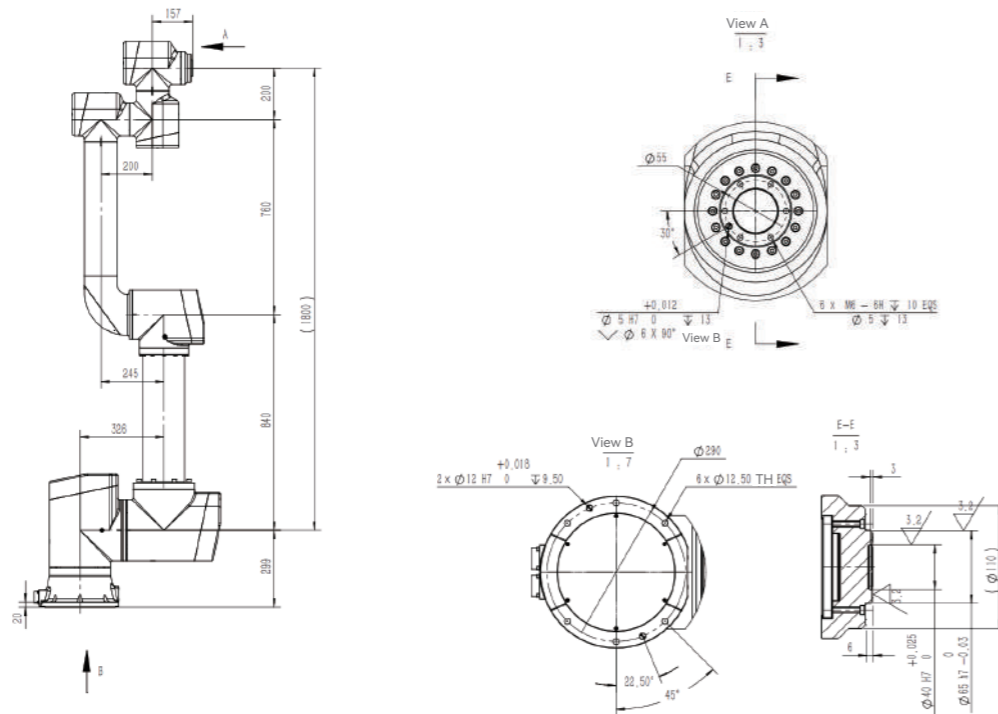
Model	VCC05-900	
Payload	5kg	
Max Working Radius	900mm	
Body Weight	26kg	
Rated Power	2.55kw	
Max Speed	J1	180° /s
	J2	180° /s
	J3	180° /s
	J4	180° /s
	J5	180° /s
	J6	180° /s
Max Operation Area	J1	±175°
	J2	±175°
	J3	-245° ~ +65°
	J4	±175°
	J5	±175°
	J6	±360°
Protective Specification	IP54/IP67	
Position Repeat Accuracy ※	±0.03mm	
Working Temperature	0~45°C	
Controller	VCRC05-G6	



VCC30-1800

Payload: 30kg
Length: 1800mm

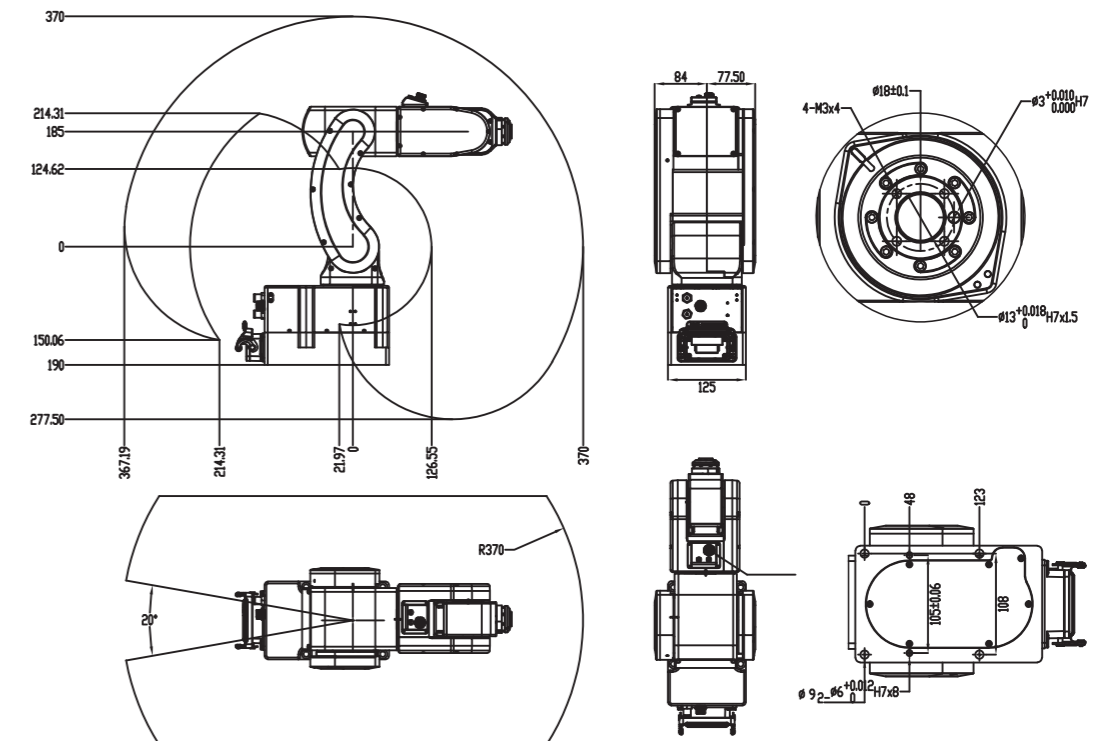
Model	VCC30-1800	
Payload	30kg	
Max Working Radius	1800mm	
Body Weight	154kg	
Rated Power	5.95kw	
Max Speed	J1	100° /s
	J2	100° /s
	J3	150° /s
	J4	180° /s
	J5	180° /s
	J6	180° /s
Max Operation Area	J1	±175°
	J2	±175°
	J3	-245° ~ +65°
	J4	±175°
	J5	±175°
	J6	±360°
Protective Specification	IP54	
Position Repeat Accuracy ※	±0.1mm	
Working Temperature	0~45°C	
Controller	VCRC05-B6	



VCR01-370

Payload: 1kg
Length: 370mm

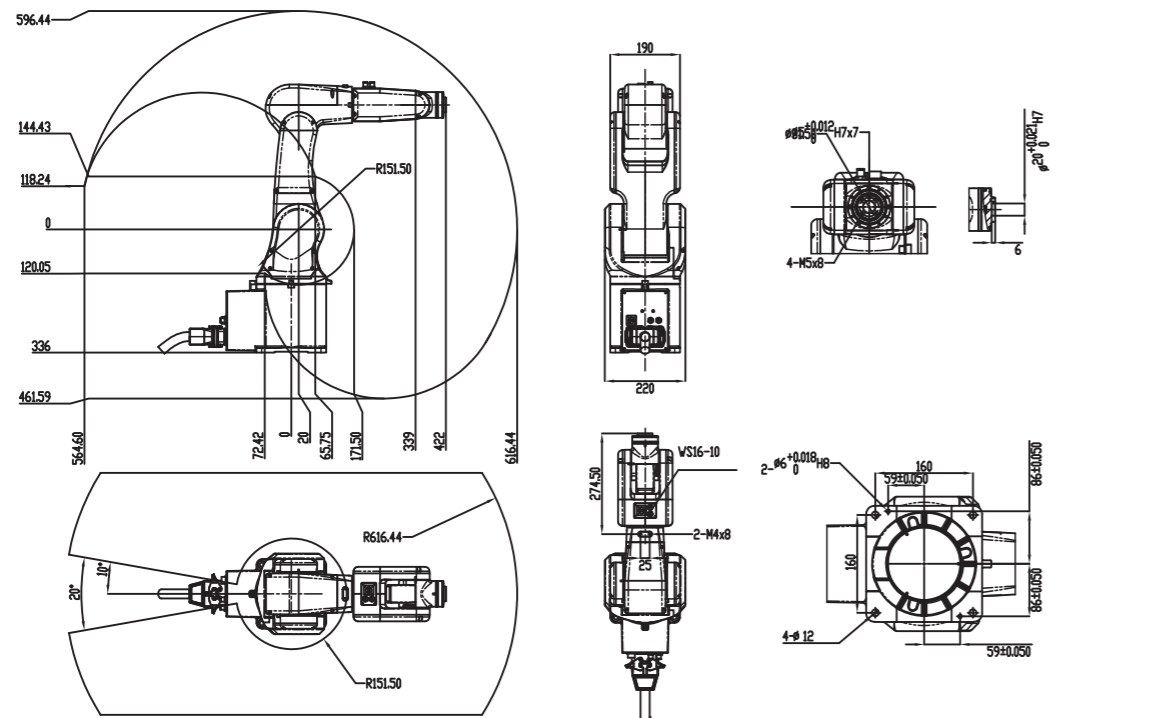
Model	VCR01-370	
Payload	1kg	
Max Working Radius	370mm	
DOF	6-axis	
Body Weight	15kg	
Rated Power	0.4kw	
Max Speed	J1	320° /s
	J2	320° /s
	J3	375° /s
	J4	500° /s
	J5	470° /s
	J6	500° /s
Max Operation Area	J1	±170°
	J2	-80° ~ 120°
	J3	-180° ~ 50°
	J4	±170°
	J5	±125°
	J6	±360°
Protective Specification	IP54	
Position Repeat Accuracy ※	±0.01mm	
Controller	VCRC04-A3	
Working Temperature	0~45°C	



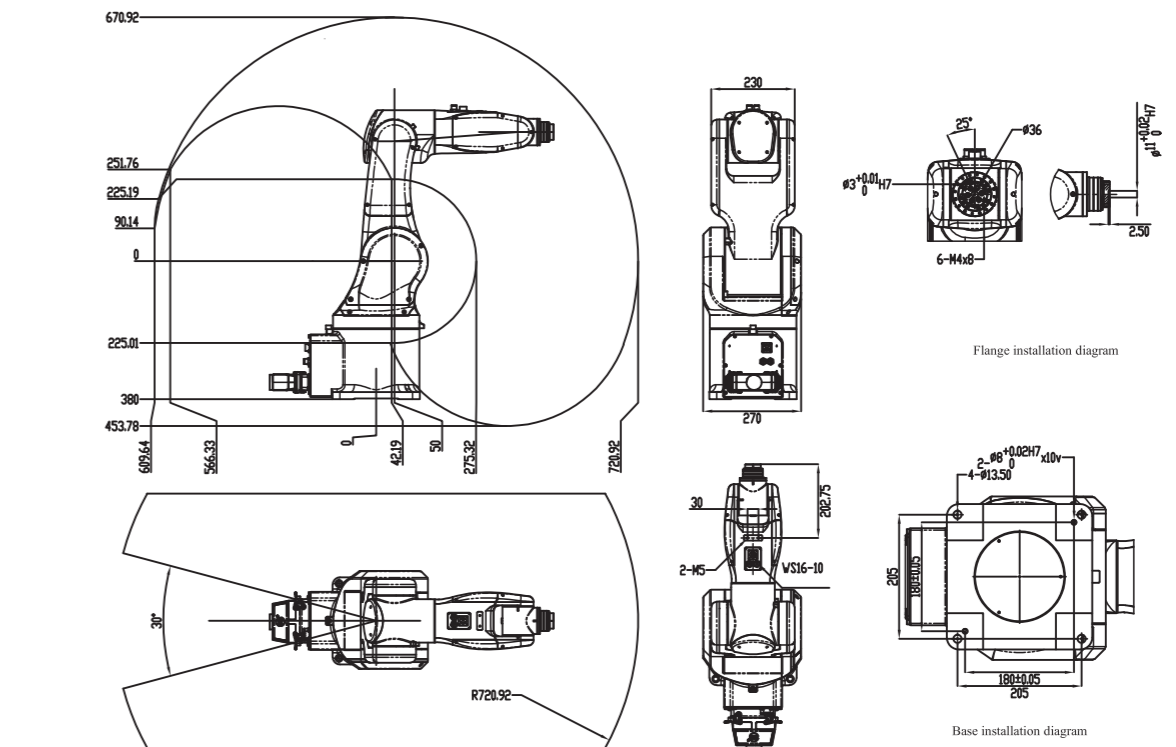
VCR03-610

Payload: 3kg
Length: 616mm

Model	VCR03-610	
Payload	3kg	
Max Working Radius	616mm	
DOF	6-axis	
Body Weight	35kg	
Rated Power	1.05kw	
Max Speed	J1	450° /s
	J2	450° /s
	J3	720° /s
	J4	720° /s
	J5	720° /s
	J6	720° /s
Max Operation Area	J1	±170°
	J2	-80° ~ 120°
	J3	-75° ~ 75°
	J4	±120°
	J5	±120°
	J6	±360°
Protective Specification	IP54	
Position Repeat Accuracy ※	±0.02mm	
Controller	VCRC04-A3	
Working Temperature	0~45°C	



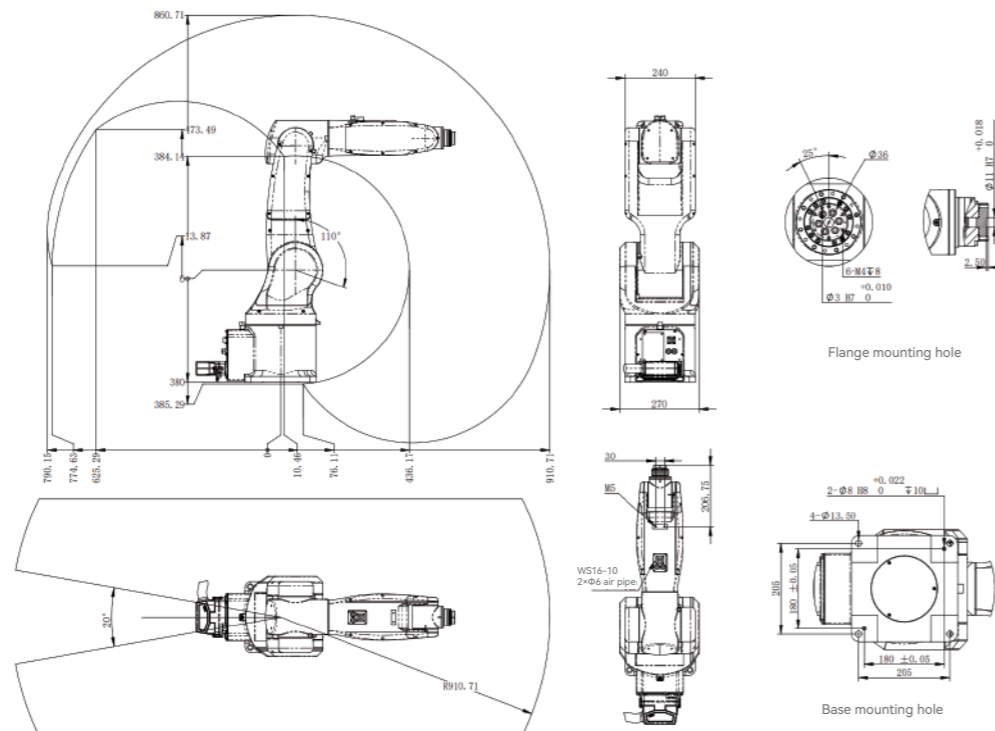
Model	VCR06-720	
Payload	6kg	
Max Working Radius	720mm	
DOF	6-axis	
Body Weight	40kg	
Rated Power	2.2kw	
Max Speed	J1	450° /s
	J2	450° /s
	J3	450° /s
	J4	458° /s
	J5	540° /s
	J6	360° /s
Max Operation Area	J1	±165°
	J2	-75° ~ 110°
	J3	-100° ~ 55°
	J4	±160°
	J5	±110°
	J6	±360°
Protective Specification	IP54/IP67(5/6-axis optional)	
Position Repeat Accuracy ※	±0.02mm	
Controller	VCRC04-A3	
Working Temperature	0~45°C	



VCR07-910

Payload: 7kg
Length: 910mm

Model	VCR07-910	
Payload	7kg	
Max Working Radius	910mm	
DOF	6-axis	
Body Weight	50kg	
Rated Power	2.4kw	
Max Speed	J1	450° /s
	J2	450° /s
	J3	450° /s
	J4	458° /s
	J5	720° /s
	J6	720° /s
Max Operation Area	J1	±170°
	J2	-75° ~ 110°
	J3	-120° ~ 50°
	J4	±160°
	J5	±120°
	J6	±360°
Protective Specification	IP54/IP67	
Position Repeat Accuracy ※	±0.02mm	
Controller	VCRC04-A3	
Working Temperature	0~45°C	

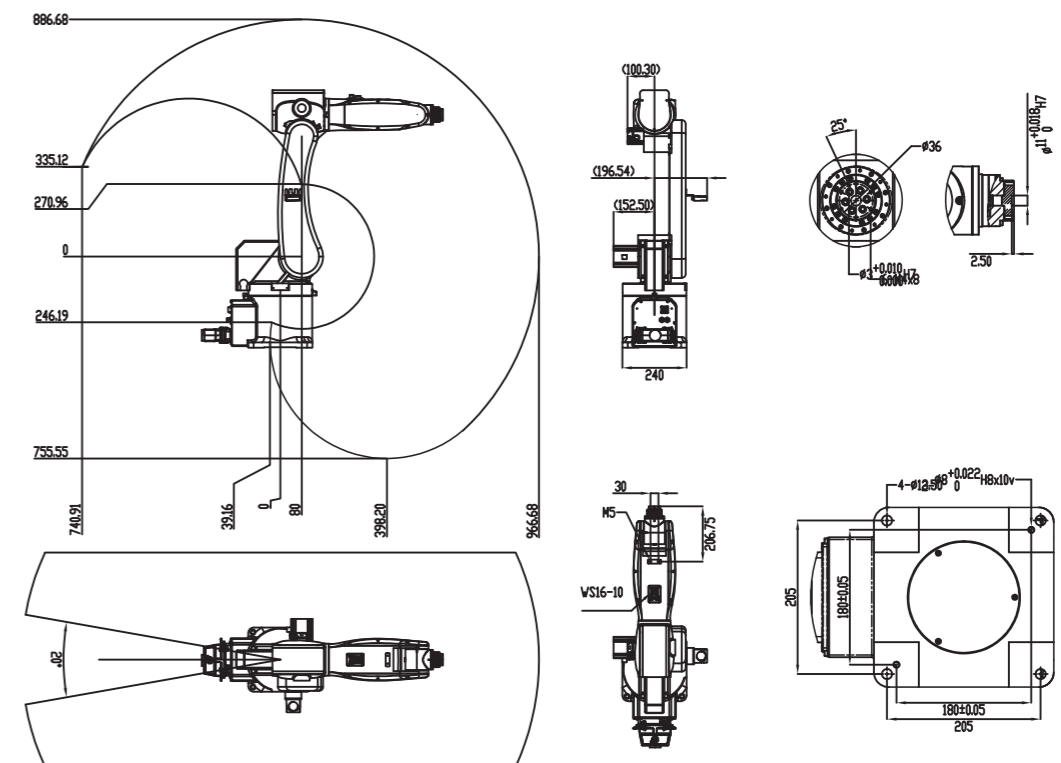


Model	VCR07-960	
Payload	7kg	
Max Working Radius	960mm	
DOF	6-axis	
Body Weight	49kg	
Rated Power	2.4kw	
Max Speed	J1	450° /s
	J2	450° /s
	J3	450° /s
	J4	458° /s
	J5	720° /s
	J6	720° /s
Max Operation Area	J1	±170°
	J2	-70° ~ 135°
	J3	-75° ~ 75°
	J4	±160°
	J5	±120°
	J6	±360°
Protective Specification	J5J6	IP67(optional)
	Others	IP54
Position Repeat Accuracy ※	±0.04mm	
Controller	VCRC04-A3	
Working Temperature	0~45°C	

VCR07-960

Payload: 7kg
Length: 960mm

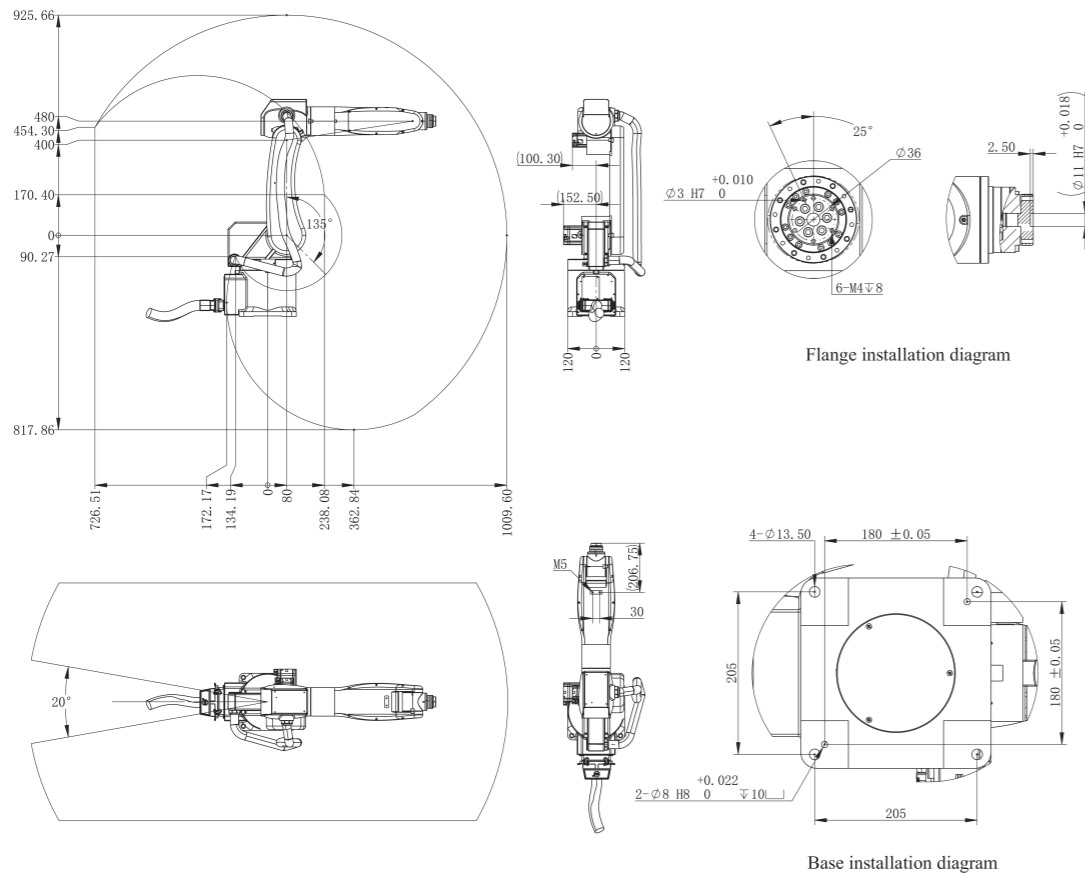
Model	VCR07-960	
Payload	7kg	
Max Working Radius	960mm	
DOF	6-axis	
Body Weight	49kg	
Rated Power	2.4kw	
Max Speed	J1	450° /s
	J2	450° /s
	J3	450° /s
	J4	458° /s
	J5	720° /s
	J6	720° /s
Max Operation Area	J1	±170°
	J2	-70° ~ 135°
	J3	-75° ~ 75°
	J4	±160°
	J5	±120°
	J6	±360°
Protective Specification	J5J6	IP67(optional)
	Others	IP54
Position Repeat Accuracy ※	±0.04mm	
Controller	VCRC04-A3	
Working Temperature	0~45°C	



VCR07-1010

Payload: 7kg
Length: 910mm

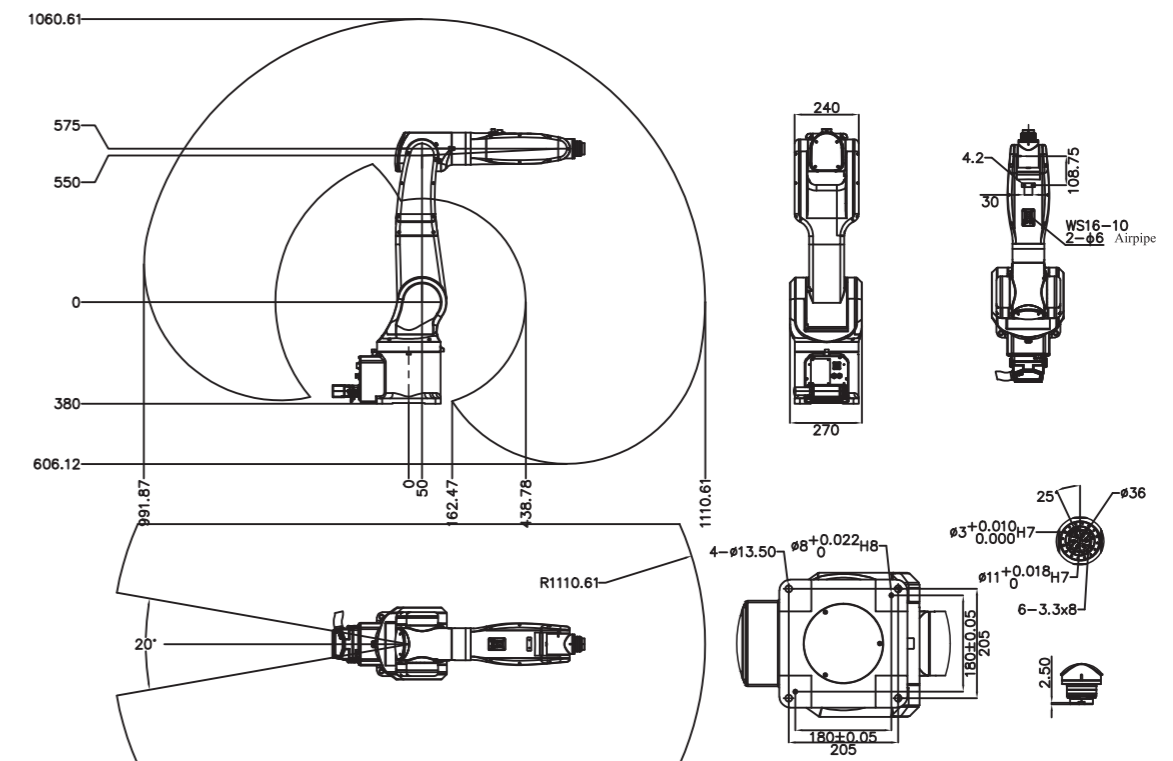
Model	VCR07-1010	
Payload	7kg	
Max Working Radius	1010mm	
DOF	6-axis	
Body Weight	50kg	
Rated Power	2.4kw	
Max Speed	J1	360°/s
	J2	322°/s
	J3	360°/s
	J4	367°/s
	J5	576°/s
	J6	576°/s
Max Operation Area	J1	±170°
	J2	-70° ~ 135°
	J3	-65° ~ 75°
	J4	±160°
	J5	±120°
	J6	±360°
Protection Level	IP54/IP67(5/6-axis optional)	
Position Repeat Accuracy ※	±0.04mm	
Controller	VCRC04-A3	
Working Temperature	0~45°C	



VCR10-1110

Payload: 10kg
Length: 1110mm

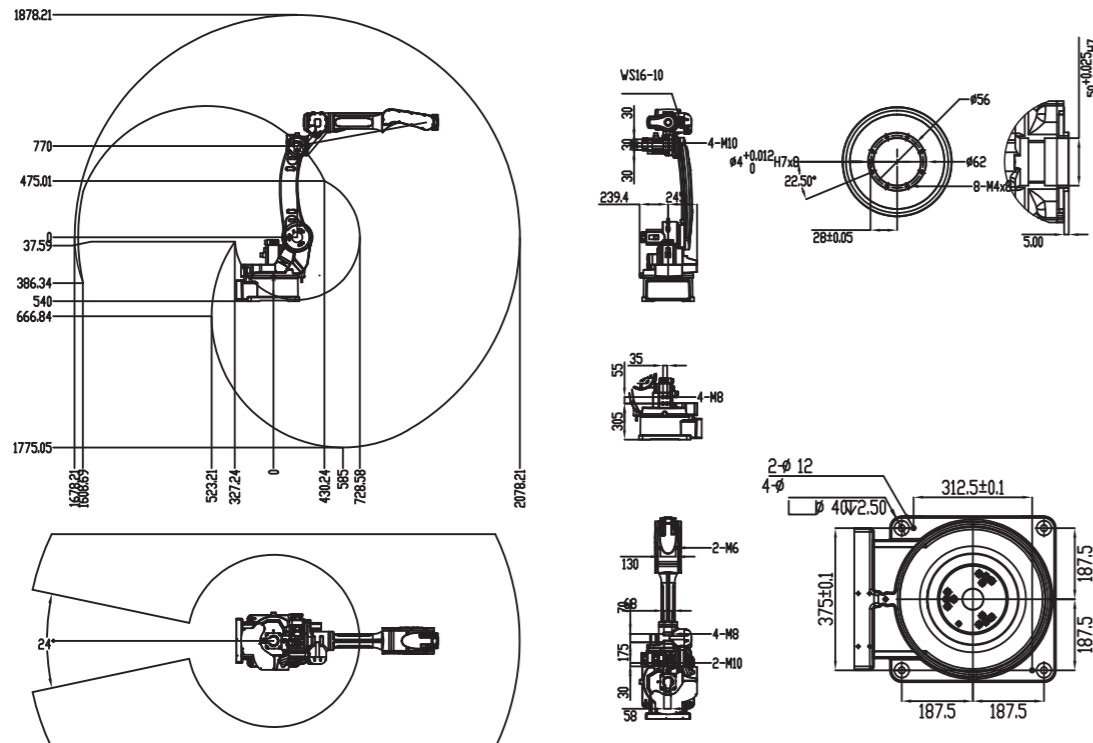
Model	VCR10-1110	
Payload	10kg	
Max Working Radius	1110mm	
DOF	6-axis	
Body Weight	55kg	
Rated Power	2.5kw	
Max Speed	J1	360° /s
	J2	300° /s
	J3	300° /s
	J4	520° /s
	J5	360° /s
	J6	450° /s
Max Operation Area	J1	±170°
	J2	-75° ~ 110°
	J3	-120° ~ 50°
	J4	±160°
	J5	±120°
	J6	±360°
Protection Level	IP54	
Position Repeat Accuracy ※	±0.03mm	
Controller	VCRC04-A3	
Working Temperature	0~45°C	



VCR06-2070

Payload: 6kg
Length: 2078mm

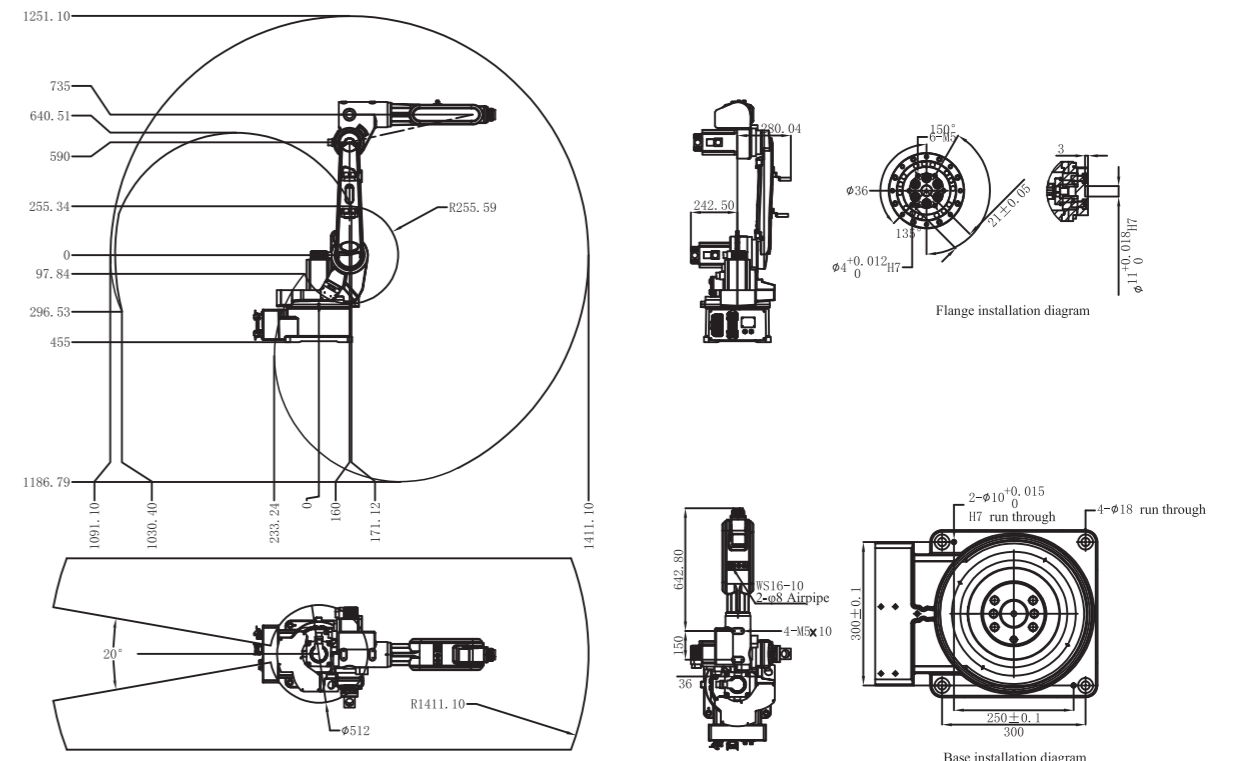
Model	VCR06-2070	
Payload	6kg	
Max Working Radius	2078mm	
DOF	6-axis	
Body Weight	210kg	
Rated Power	4.3kw	
Max Speed	J1	168° /s
	J2	148° /s
	J3	160° /s
	J4	330° /s
	J5	450° /s
	J6	700° /s
Max Operation Area	J1	±160°
	J2	-90° ~ 150°
	J3	-100° ~ 75°
	J4	±190°
	J5	±130°
	J6	±360°
Protective Specification	IP54	
Position Repeat Accuracy ※	±0.07mm	
Controller	VCRC05-B6	
Working Temperature	0~45°C	



VCR12-1410

Payload: 12kg
Length: 1410mm

Model	VCR12-1410	
Payload	12kg	
Max Working Radius	1410mm	
DOF	6-axis	
Body Weight	160kg	
Rated Power	4.3kw	
Max Speed	J1	148° /s
	J2	148° /s
	J3	230° /s
	J4	480° /s
	J5	256° /s
	J6	450° /s
Max Operation Area	J1	±170°
	J2	-92° ~ 153°
	J3	-100° ~ 80°
	J4	±140°
	J5	±120°
	J6	±360°
Protective Specification	IP54/IP67(5/6-axis optional)	
Position Repeat Accuracy ※	±0.06mm	
Controller	VCRC05-B6	
Working Temperature	0~45°C	



VCR30-1720

Payload: 30kg
Length: 1721mm

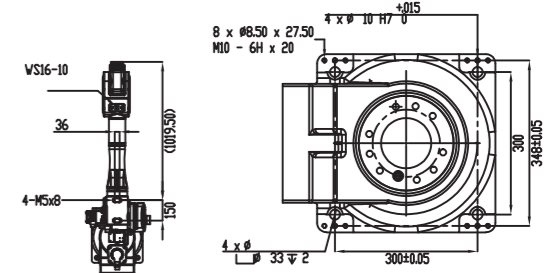
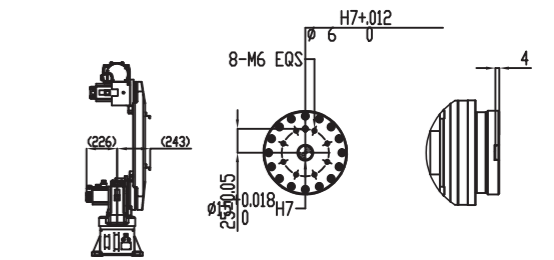
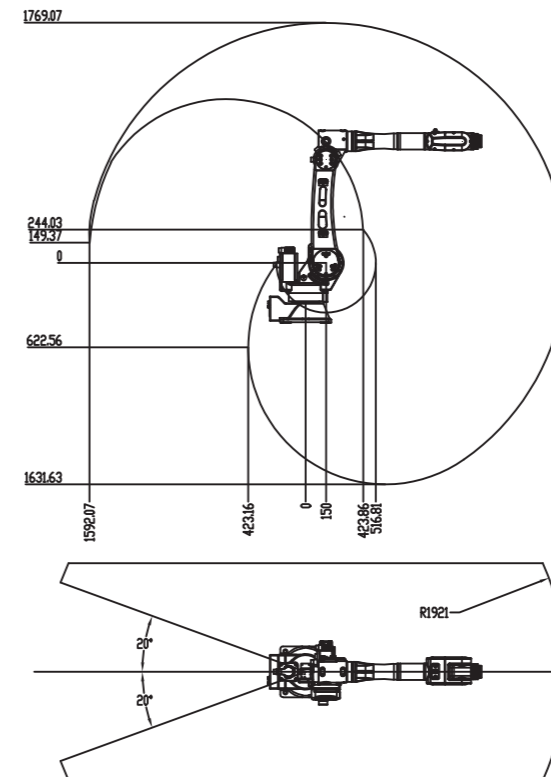
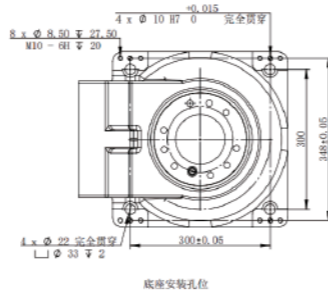
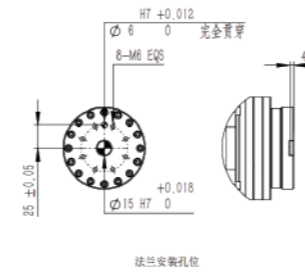
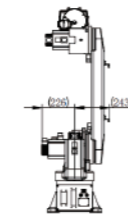
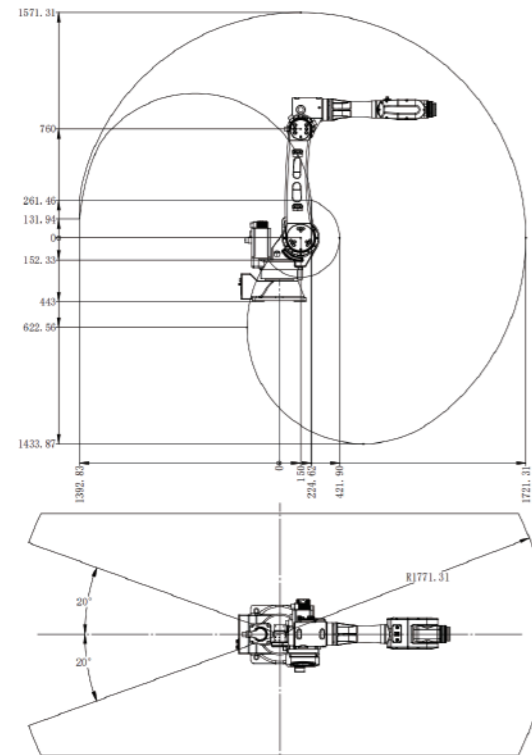
Model	VCR30-1720	
Payload	30kg	
Max Working Radius	1721mm	
DOF	6-axis	
Body Weight	220kg	
Rated Power	5kw	
Max Speed	J1	186° /s
	J2	170°/s
	J3	200° /s
	J4	452° /s
	J5	330°/s
	J6	450°/s
Max Operation Area	J1	±160°
	J2	-80° ~ 150°
	J3	-100° ~ 80°
	J4	±150°
	J5	±110°
	J6	±360°
Protective Specification	IP54/IP67(5/6-axis optional)	
Position Repeat Accuracy ※	±0.05mm	
Controller	VCRC05-B6	
Working Temperature	0~45°C	



VCR30-1920

Payload: 30kg
Length: 1920mm

Model	VCR30-1920	
Payload	30kg	
Max Working Radius	1920mm	
DOF	6-axis	
Body Weight	220kg	
Rated Power	5.2kw	
Max Speed	J1	186° /s
	J2	170° /s
	J3	200° /s
	J4	452° /s
	J5	330° /s
	J6	450° /s
Max Operation Area	J1	±160°
	J2	-80° ~ 150°
	J3	-100° ~ 80°
	J4	±150°
	J5	±110°
	J6	±360°
Protective Specification	IP54/IP67(5/6-axis optional)	
Position Repeat Accuracy ※	±0.05mm	
Controller	VCRC05-B6	
Working Temperature	0~45°C	



VCR60-2110

Payload: 60kg
Length: 2119mm

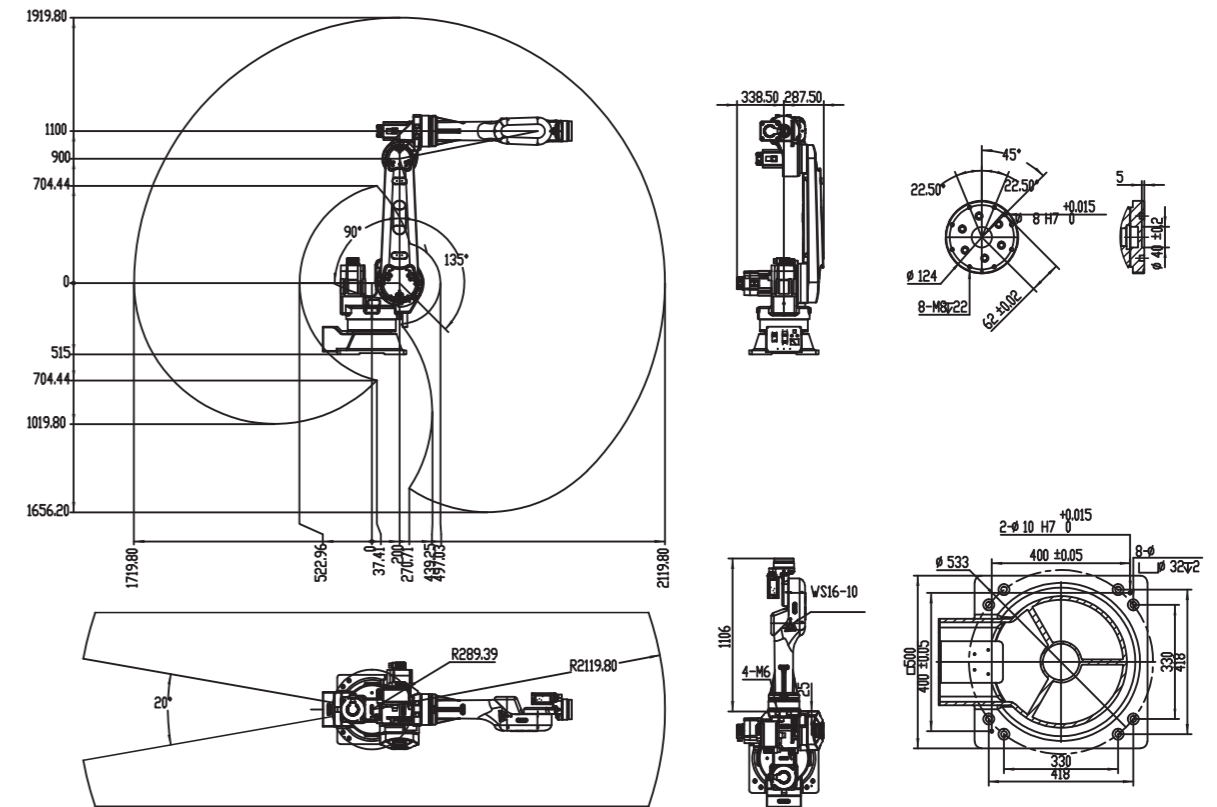
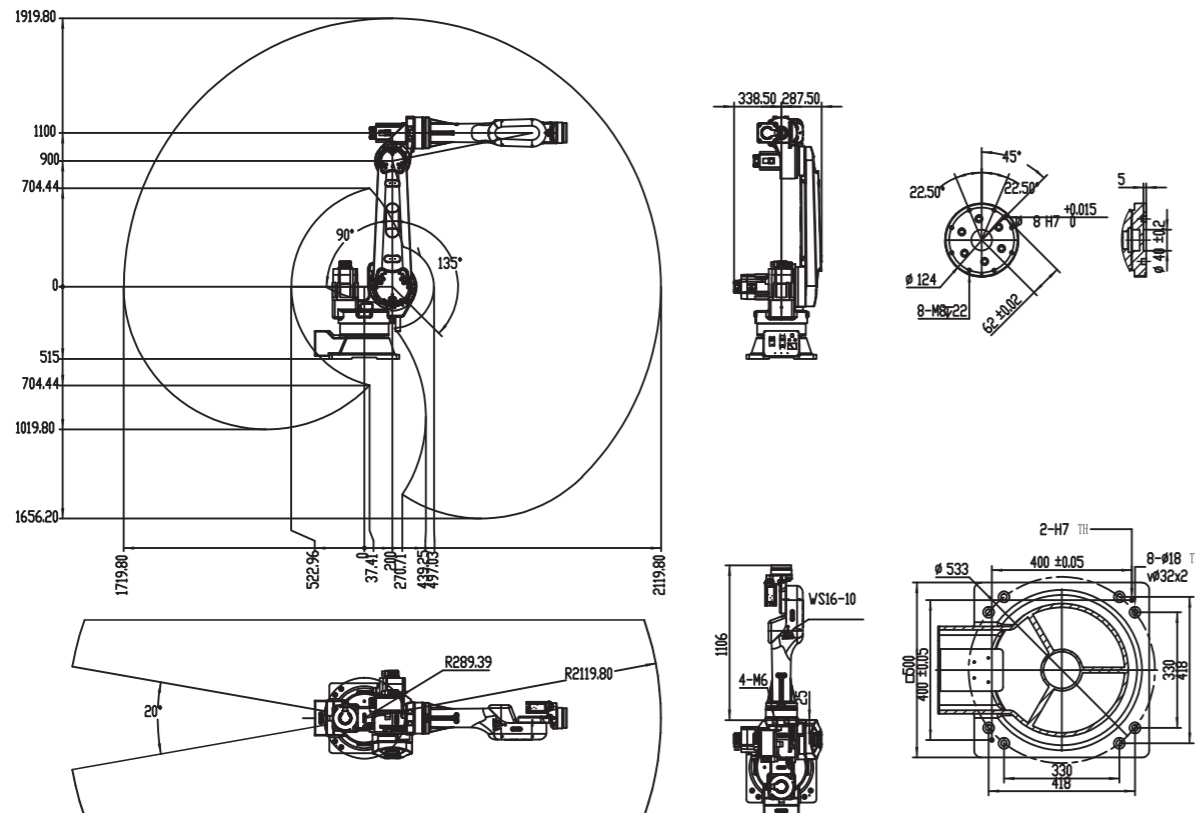
Model	VCR60-2110	
Payload	60kg	
Max Working Radius	2119mm	
DOF	6-axis	
Body Weight	600kg	
Rated Power	6.5kW	
Max Speed	J1	127°/s
	J2	105°/s
	J3	165°/s
	J4	253°/s
	J5	250°/s
	J6	372°/s
Max Operation Area	J1	±170°
	J2	-90° ~ 135°
	J3	-185° ~ 90°
	J4	±200°
	J5	±105°
	J6	±360°
Protective Specification	IP54	
Position Repeat Accuracy ※	±0.08mm	
Controller	VCRC03-C6	
Working Temperature	0~45°C	



VCR70-2110

Payload: 70kg
Length: 2119mm

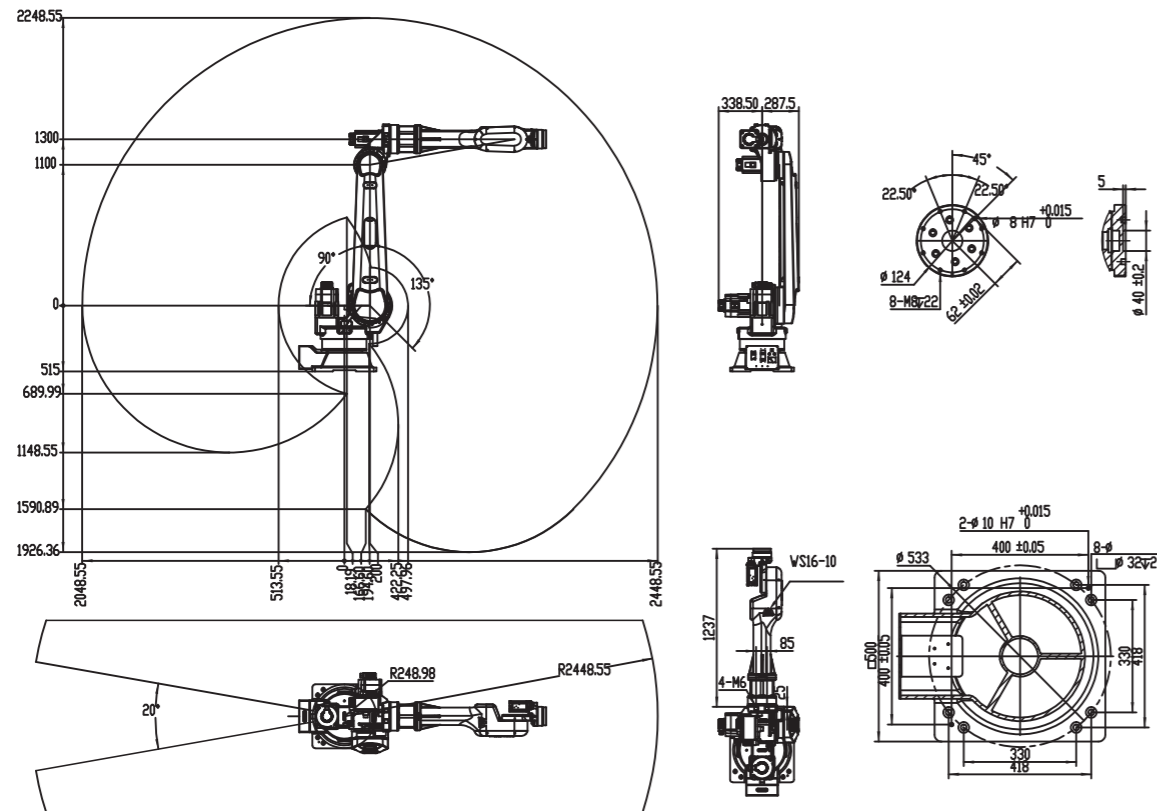
Model	VCR70-2110	
Payload	70kg	
Max Working Radius	2119mm	
DOF	6-axis	
Body Weight	600kg	
Rated Power	6.8kW	
Max Speed	J1	127°/s
	J2	105°/s
	J3	165°/s
	J4	253°/s
	J5	250°/s
	J6	372°/s
Max Operation Area	J1	±170°
	J2	-90° ~ 135°
	J3	-185° ~ 90°
	J4	±200°
	J5	±105°
	J6	±360°
Protective Specification	IP54	
Position Repeat Accuracy ※	±0.08mm	
Controller	VCRC03-C6	
Working Temperature	0~45°C	



VCR50-2440

Payload: 50kg
Length: 2448mm

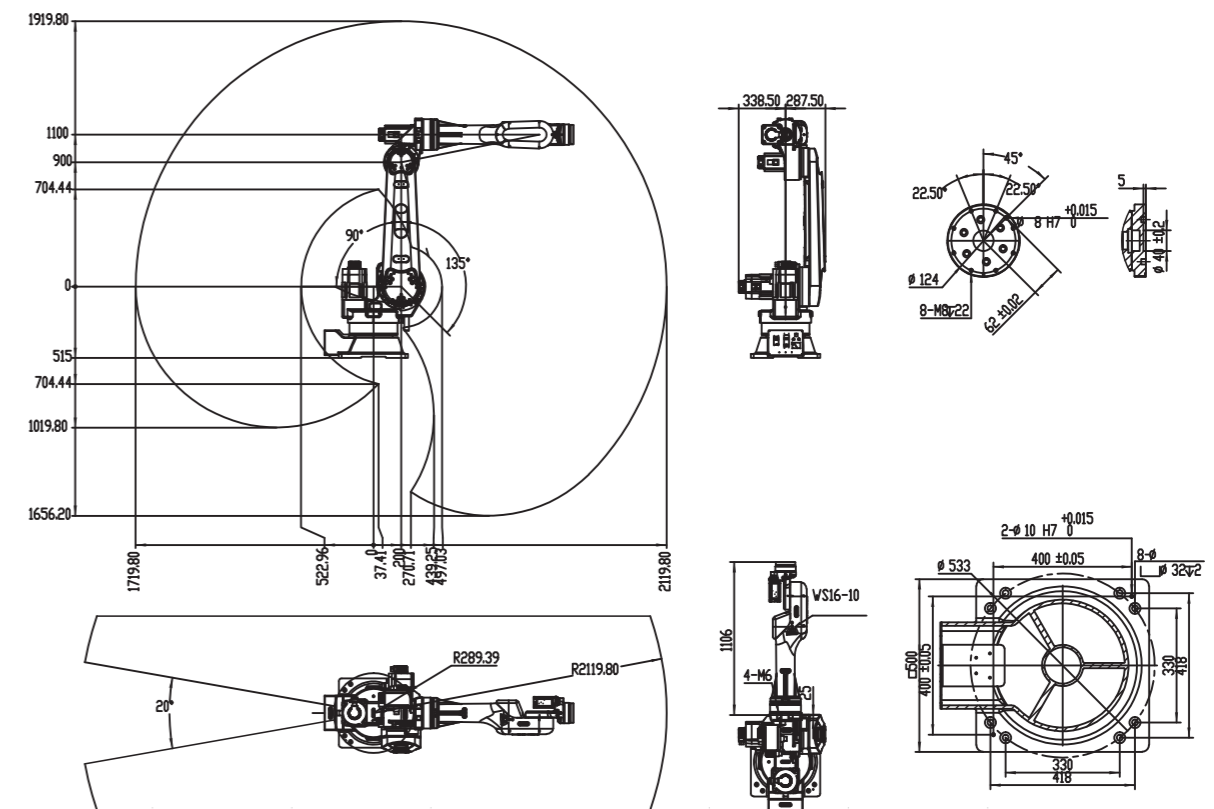
Model	VCR50-2440	
Payload	50kg	
Max Working Radius	2448mm	
DOF	6-axis	
Body Weight	650kg	
Rated Power	7kw	
Max Speed	J1	127°/s
	J2	105°/s
	J3	150°/s
	J4	231°/s
	J5	250°/s
	J6	372°/s
Max Operation Area	J1	±170°
	J2	-90° ~ 135°
	J3	-185° ~ 90°
	J4	±200°
	J5	±120°
	J6	±360°
Protective Specification	IP54	
Position Repeat Accuracy ※	±0.08mm	
Controller	VCRC03-C6	
Working Temperature	0~45°C	



VCR210-2700

Payload: 210kg
Length: 2700mm

Model	VCR210-2700	
Payload	210kg	
Max Working Radius	2700mm	
DOF	6-axis	
Body Weight	1300kg	
Rated Power	8.5kw	
Max Speed	J1	114°/s
	J2	83°/s
	J3	95°/s
	J4	180°/s
	J5	165°/s
	J6	219°/s
Max Operation Area	J1	±185°
	J2	-50° ~ 85°
	J3	-180° ~ 70°
	J4	±360°
	J5	±125°
	J6	±360°
Protective Specification	J5 J6	IP65
	Others	IP54
Position Repeat Accuracy ※	±0.1mm	
Controller	VCRC03-D6	
Working Temperature	0~45°C	



VCR155-3200

Payload: 155kg
Length: 3200mm

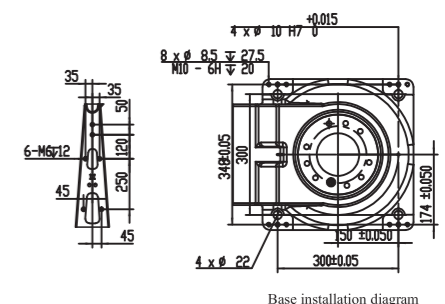
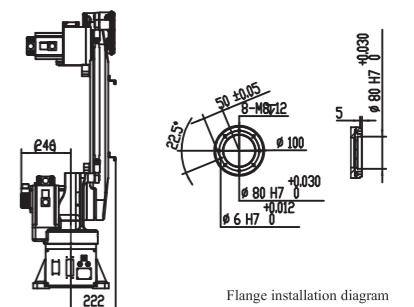
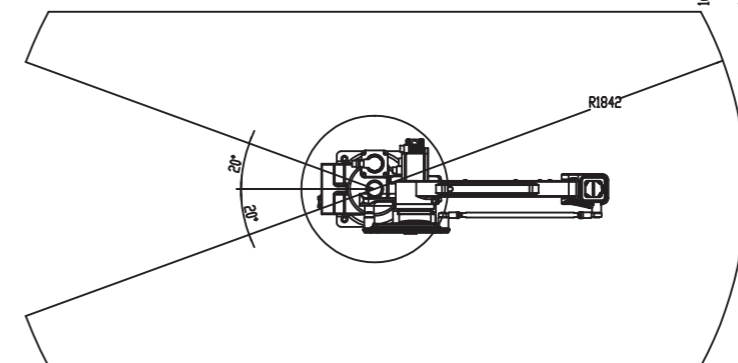
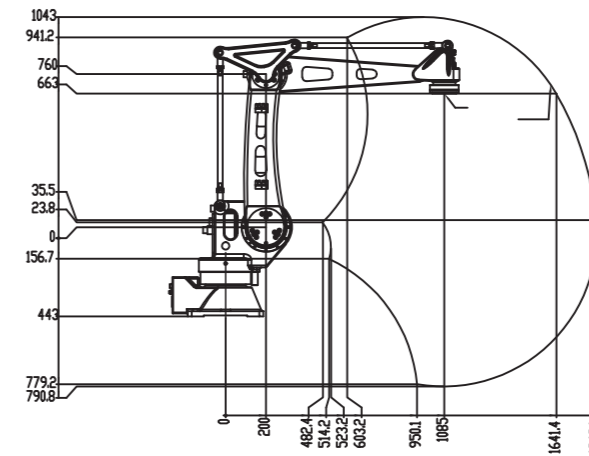
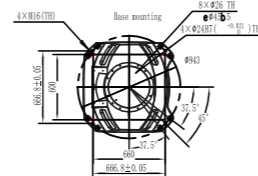
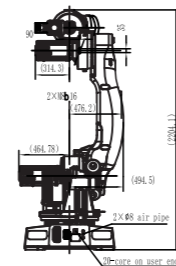
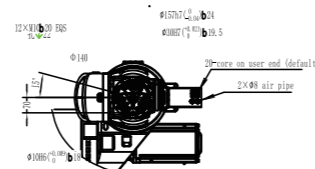
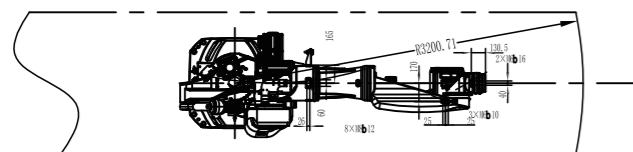
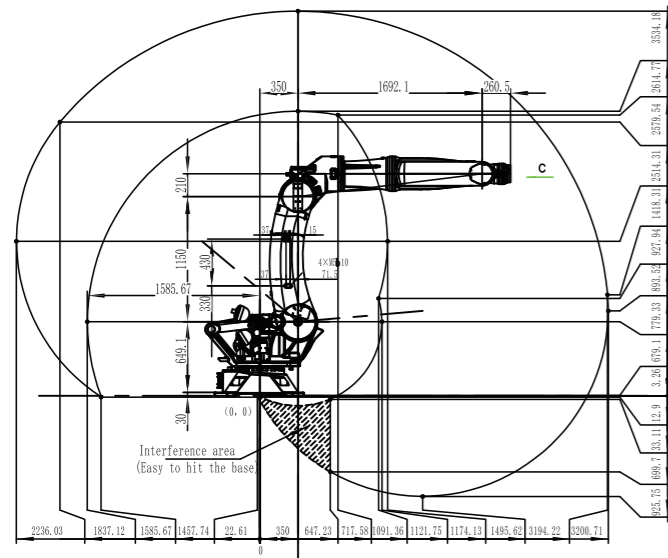
Model	VCR155-3200	
Payload	155kg	
Max Working Radius	3200mm	
DOF	6-axis	
Body Weight	1320kg	
Rated Power	7.5kw	
Max Speed	J1	110°/s
	J2	83°/s
	J3	95°/s
	J4	150°/s
	J5	150°/s
	J6	200°/s
Max Operation Area	J1	±185°
	J2	-40°~ 85°
	J3	-180°~ 75°
	J4	±360°
	J5	±125°
	J6	±360°
Protective Specification	J5 J6	IP65
	Others	IP54
Position Repeat Accuracy ※	±0.1mm	
Controller	VCRC03-D6	
Working Temperature	0~45°C	



VCP30-1840

Payload: 30kg
Length: 1840mm

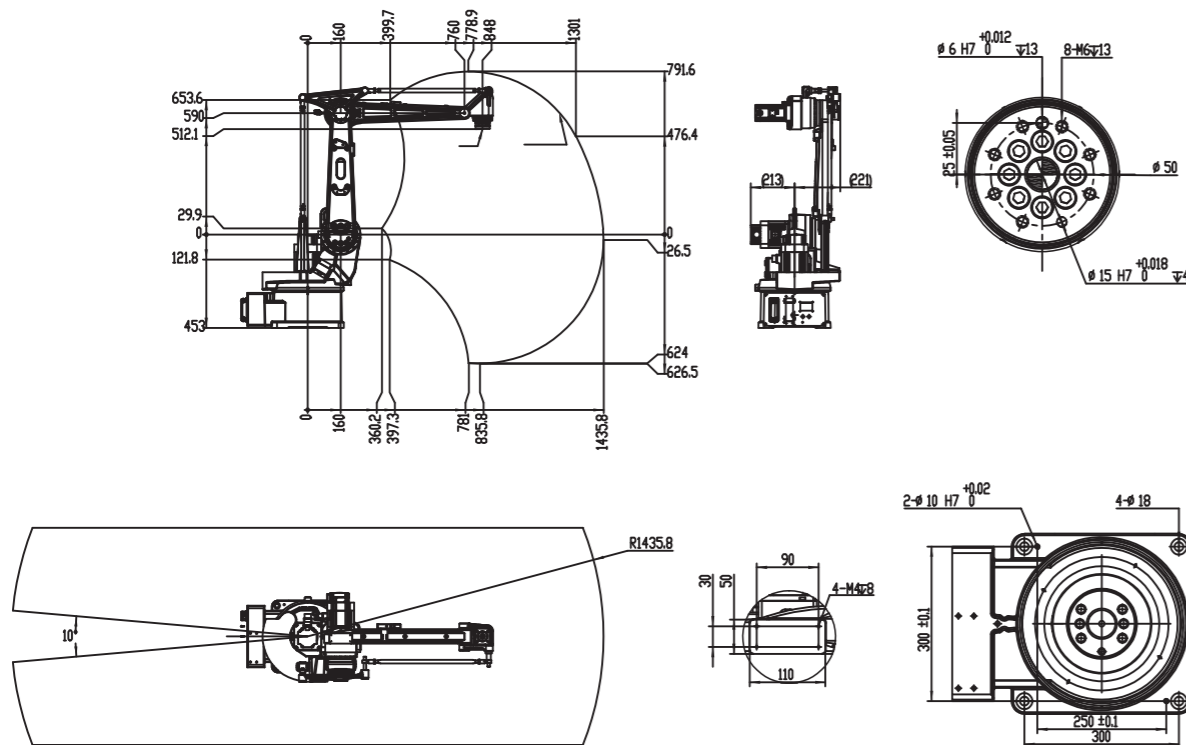
Model	VCP30-1840	
Payload	30kg	
Max Working Radius	1840mm	
DOF	4-axis	
Body Weight	240kg	
Rated Power	4.2kw	
Max Speed	J1	200°/s
	J2	175°/s
	J3	175°/s
	J4	360°/s
Max Operation Area	J1	±175°
	J2	-35°~ 85°
	J3	-90°~ 70°
	J4	±360°
Protective Specification	IP54	
Position Repeat Accuracy ※	±0.08mm	
Controller	VCRC05-B6/VCRC03-D6	
Working Temperature	0~45°C	



VCP12-1430

Payload: 12kg
Length: 1435mm

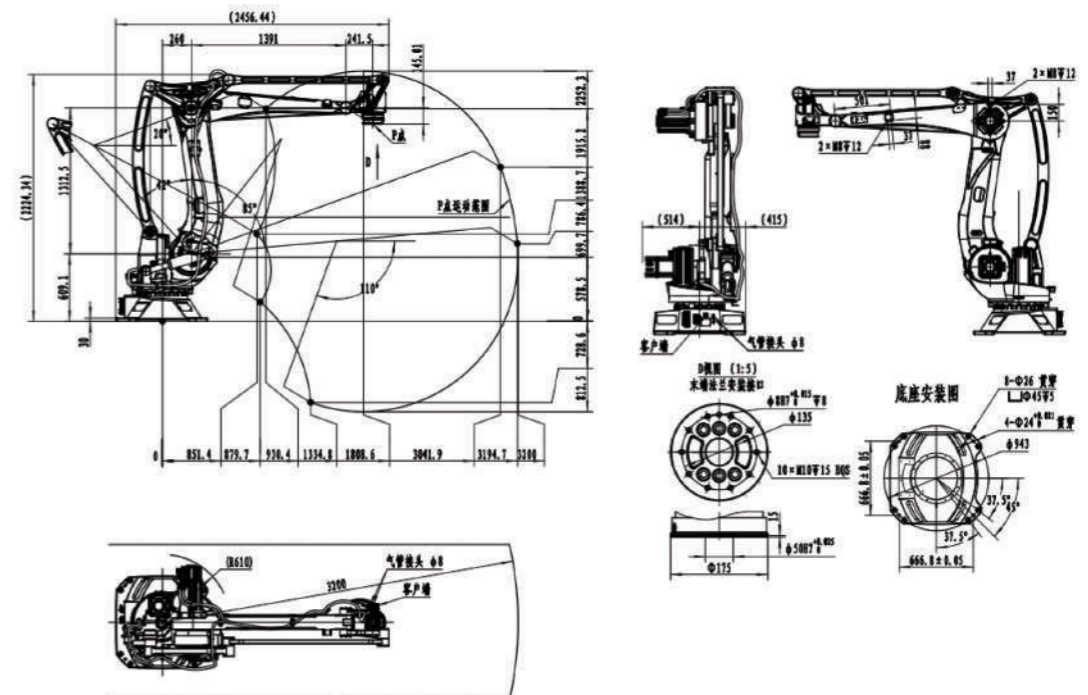
Model	VCP12-1430	
Payload	12kg	
Max Working Radius	1435mm	
DOF	4-axis	
Body Weight	175kg	
Rated Power	2.5kw	
Max Speed	J1	210° /s
	J2	205° /s
	J3	185° /s
	J4	500° /s
Max Operation Area	J1	±175°
	J2	-35° ~ 85°
	J3	-90° ~ 70°
	J4	±360°
Protective Specification	IP54	
Position Repeat Accuracy ※	±0.08mm	
Controller	VCRC05-B6/VCRC03-D6	
Working Temperature	0~45°C	



VCP120-3200

Payload: 120kg
Length: 3200mm

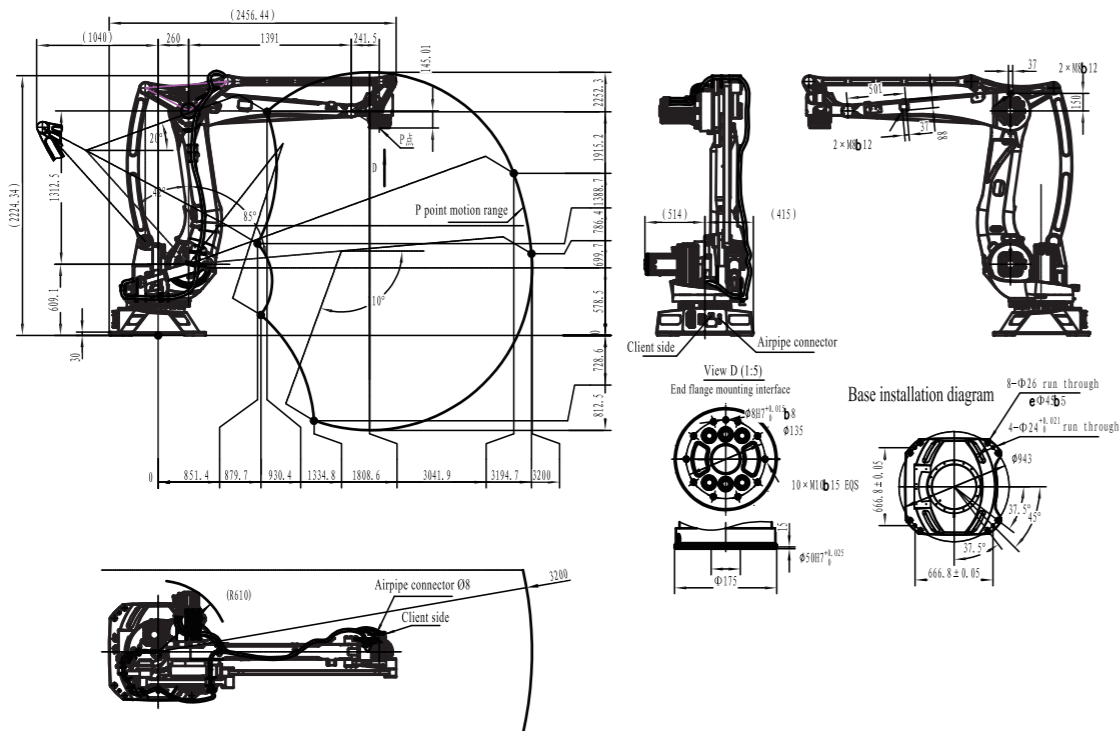
Model	VCP120-3200	
Payload	120kg	
Max Working Radius	3200mm	
DOF	4-axis	
Body Weight	1193kg	
Rated Power	5.5kw	
Max Speed	J1	140° /s
	J2	121° /s
	J3	140° /s
	J4	440° /s
Max Operation Area	J1	±185°
	J2	-42° ~ 85°
	J3	-20° ~ 110°
	J4	±360°
Protective Specification	IP54/IP65 (4-axis optional)	
Position Repeat Accuracy ※	±0.1mm	
Controller	VCRC03-C6	
Working Temperature	0~45°C	



VCP180-3200

Payload: 180kg
Length: 3200mm

Model	VCP180-3200	
Payload	180kg	
Max Working Radius	3200mm	
DOF	4-axis	
Body Weight	1193kg	
Rated Power	5.5kw	
Max Speed	J1	105° /s
	J2	83° /s
	J3	129.5° /s
	J4	270° /s
Max Operation Area	J1	±185°
	J2	-42° ~ 85°
	J3	-20° ~ 110°
	J4	±360°
Protective Specification	IP54/IP65 (4-axis optional)	
Position Repeat Accuracy ※	±0.1mm	
Controller	VCRC03-C6	
Working Temperature	0~45°C	



VCRP04 Teach Pendant

Model	VCRP04-DS	VCRP04-QT
Main Chip	REALTEK	ARM
Memory	/	512MBDDR
Capacity	/	4G Flash
OS	/	LINUX
Touch Screen	Resistance-type	Resistance-type
IDE	/	QT5.15
USB	/	USB2.0HOST
Touch Screen Resolution	8" TFT resolution: 1024*768	
Key	12 log keys, 4 program control keys, and 4 customizable function keys	
Switch	Emergency stop switch, enable switch, and mode switch	
Protection Level	IP54	
Communication	LVDS	Ethernet
Cable Length	5m	10/15/20/30m
Operating Temperature	-30° ~ 80°	
Outer Dimension	290mm*240mm*53mm	



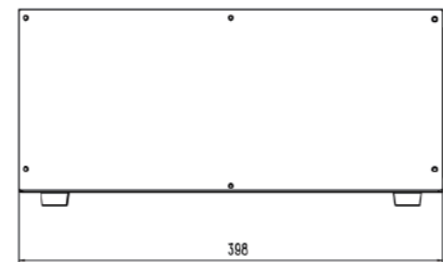
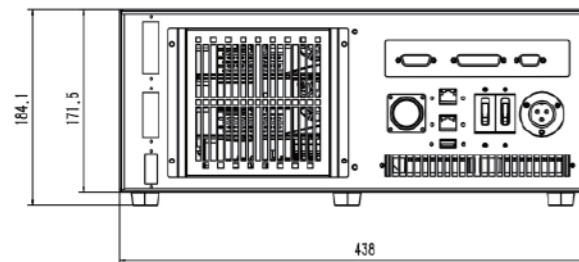
- High-performance processor: a built-in high-performance processor in the controller, which ensures stable operation and high-speed data transmission to achieve complex multi-axis motion control.
- Various communication interfaces: TRP04 pendant support Ethernet, serial port, CAN bus and more for convenient industrial equipment connection and data interaction.
- Remote monitoring and debugging: Remote access to the TRP04 teach pendant through the Internet for real-time monitoring of the robot's operating status, remote debugging and program updating to improve work efficiency.

VCRC4-A3 Controller

Model	VCRC4-A3
Installation Method	Vertical
Standard IO	18×NPN input,10×RO
Comm Port	Ethernet For TCP/IP, Modbus TCP, Ethernet/IP, and MC communication
	EtherCAT: For external axis expansion
	Modbus-TCP to RS232 or RS485
	USB2.0: For program backup and loading, and export of robot status information
Control Mode	PC programming platform, pendant, remote IO control, remote Modbus control, and API
Protection Level	IP54
Operating Environment	Temp.: 0°C ~40°C; Humidity: 20%~95%RH(30°C) (no condensation)
Dimension	438mmx398mmx185mm
Weight	12kg
Application	VCSG030-500,VCSG100-700, VCSH030-400/500/600,VCSH100-800/900/1000, VCSH200-1200,VCSH030-500/600, VCSW060-500/600/700,VCR01-370, VCR03-610,VCR06-720,VCR07-910, VCR07-960,VCR10-1110



Controller Dimension

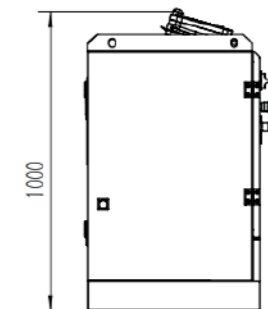
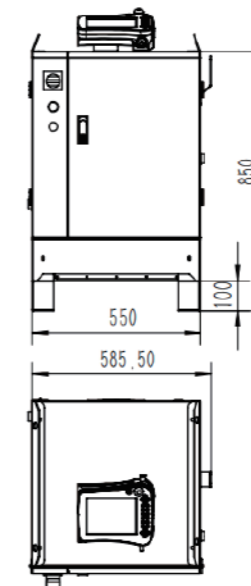
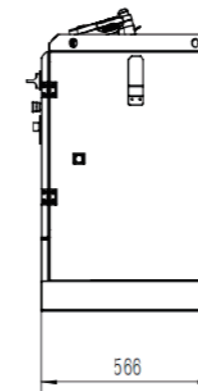


VCRC5-B6 Controller

Model	VCRC5-B6
Installation Method	Vertical
Standard IO	Handling: 18×NPN input,10×RO(relay output) Welding: 6×NPN input,10×RO, 2×AO(analog output)
Comm Port	Ethernet For TCP/IP, Modbus TCP, Ethernet/IP, and MC communication
	EtherCAT: For external axis expansion
	Modbus-TCP to RS232 or RS485
	USB2.0: For program backup and loading, and export of robot status information
Control Mode	PC programming platform, pendant, remote IO control, remote Modbus control, and API
Protection Level	IP65
Operating Environment	Temp.: 0°C ~40°C; Humidity: 20%~95%RH(30°C) (no condensation)
Dimension	850mmx550mmx566mm
Weight	76kg
Application	VCC30-1800,VCR06-1410,VCR10-1450, VCR12-1410,VCR06-2070,VCR20-1720, VCR20-1920,VCR30-1720,VCR30-1920, VCP12-1430,VCP30-1840



Controller Dimension

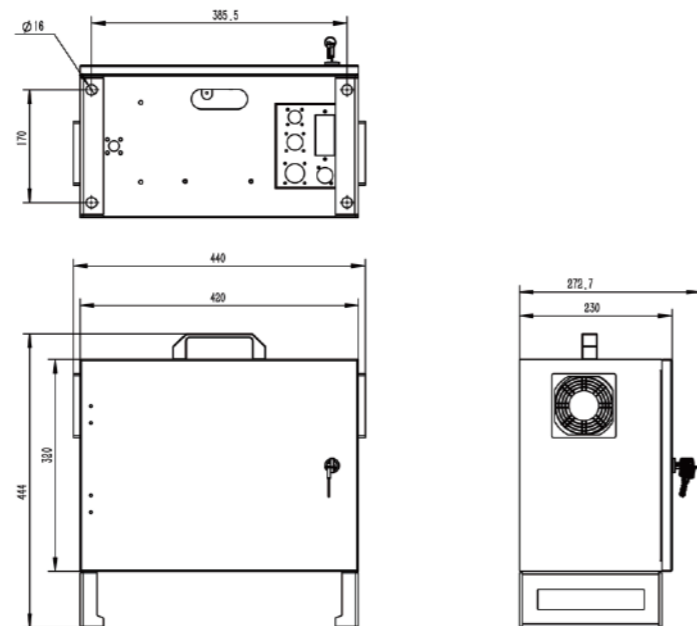


VCRC5-G6 Controller

Model	VCRC5-G6
Installation Method	Vertical
Standard IO	10×NPN input, 14×NPN output
Comm Port	Ethernet For TCP/IP, Modbus TCP, Ethernet/IP, and MC communication
	EtherCAT: For external axis expansion
	Modbus-TCP to RS232 or RS485
	USB2.0: For program backup and loading, and export of robot status information
Control Mode	PC programming platform, pendant, remote IO control, remote Modbus control, and API
Protection Level	IP54
Operating Environment	Temp.: 0°C ~40°C; Humidity: 20%~95%RH(30°C) (no condensation)
Dimension	420mmx235mmx405mm
Weight	14kg
Application	VCC03-580, VCC05-900, VCC10-1310, VCC20-1650



Controller Dimension

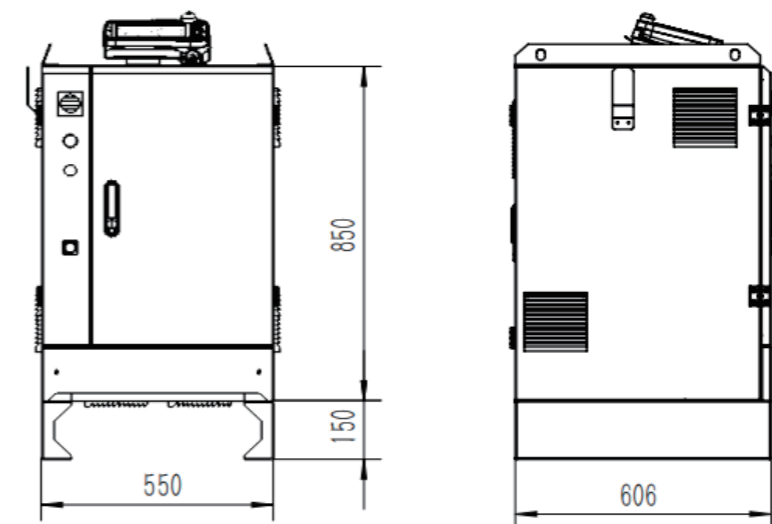


VCRC3-C6 Controller

Model	VCRC3-C6
Installation Method	Vertical
Standard IO	10×NPN input, 14×RO
Comm Port	Ethernet For TCP/IP, Modbus TCP, Ethernet/IP, and MC communication
	EtherCAT: For external axis expansion
	Modbus-TCP to RS232 or RS485
	USB2.0: For program backup and loading, and export of robot status information
Control Mode	PC programming platform, pendant, remote IO control, remote Modbus control, and API
Protection Level	IP54
Operating Environment	Temp.: 0°C ~40°C; Humidity: 20%~95%RH(30°C) (no condensation)
Dimension	1000mmx550mmx606mm
Weight	100kg
Application	VCR60-2110, VCR70-2110, VCR50-2440, VCP180-3200



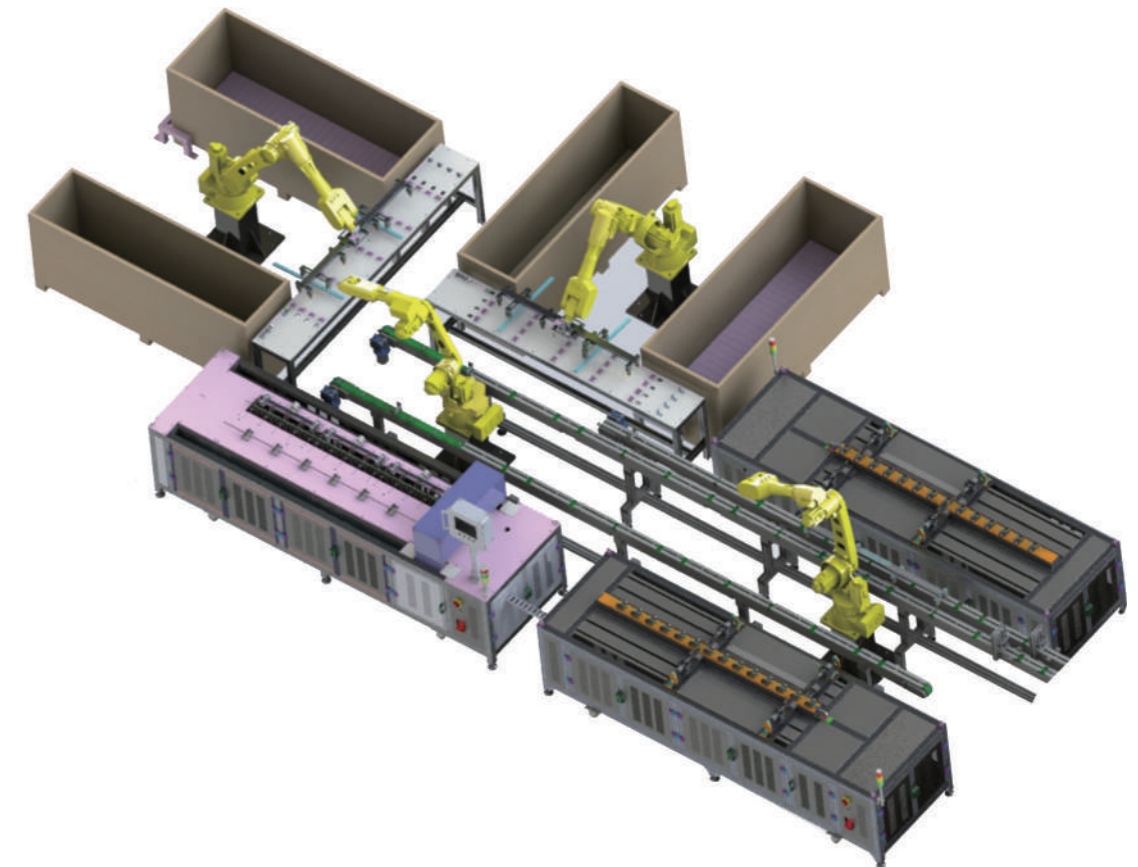
Controller Dimension



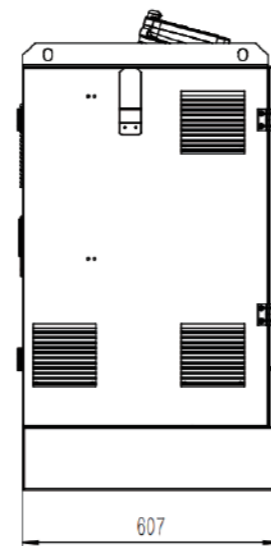
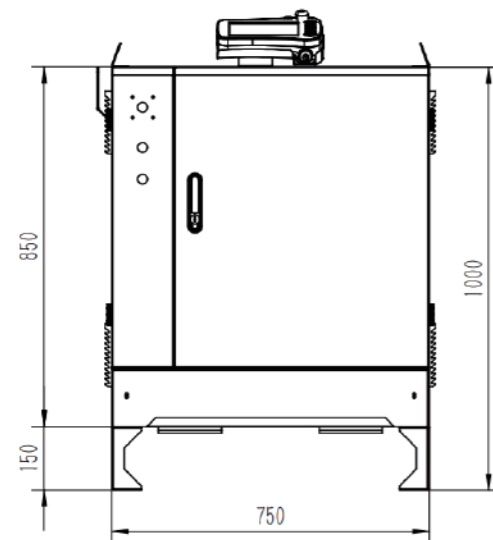
VCRC3-D6 Controller

Application Scenario

Model	VCRC3-D6
Installation Method	Vertical
Standard IO	10×NPN input, 14×RO
Comm Port	Ethernet For TCP/IP, Modbus TCP, Ethernet/IP, and MC communication
	EtherCAT: For external axis expansion
	Modbus-TCP to RS232 or RS485
	USB2.0: For program backup and loading, and export of robot status information
Control Mode	PC programming platform, pendant, remote IO control, remote Modbus control, and API
Protection Level	IP54
Operating Environment	Temp.: 0°C ~40°C; Humidity: 20%~95%RH(30°C) (no condensation)
Dimension	1000mm×750mm×607mm
Weight	140kg
Application	VCR210-2700, VCR155-3200, VCP12-1430, VCP30-1840



Controller Dimension



VEICHI Robotics provides technical services such as robot body and integrated robot platform, which are now widely used across multiple industrial scenarios with successful cases in welding, painting, grinding, teaching, assembling, sorting, machine tool loading and unloading, palleting and handling and more, accumulating unanimous praise from customers. In addition to the traditional industrial scenarios like automotive parts and components, 3C electronics, metal processing, packaging and logistics, university research, etc., Veichi Robotics is also entering into new fields like medical, semiconductor, new energy, photovoltaic, lithium-ion power, and new retail.

Welding

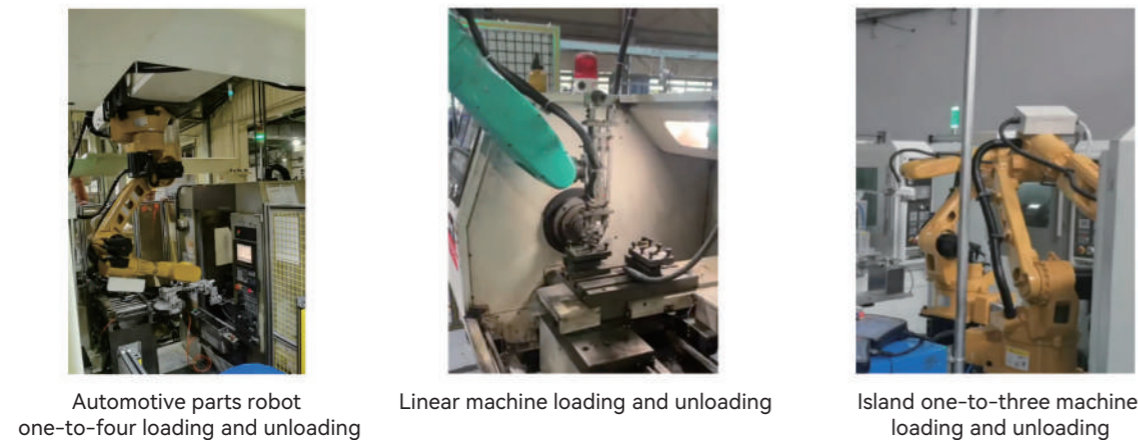
The new generation of innovative welding technology integrates laser trackers, 3D vision systems, and offline trajectory generation, enabling robots to adapt intelligently to complex paths and resist external disturbances.

Automatic welding robots can replace 2-3 welders' workload, ensuring quality while cutting costs. This boosts product qualification rates, shortens iteration cycles, and strengthens customer trust and market competitiveness.



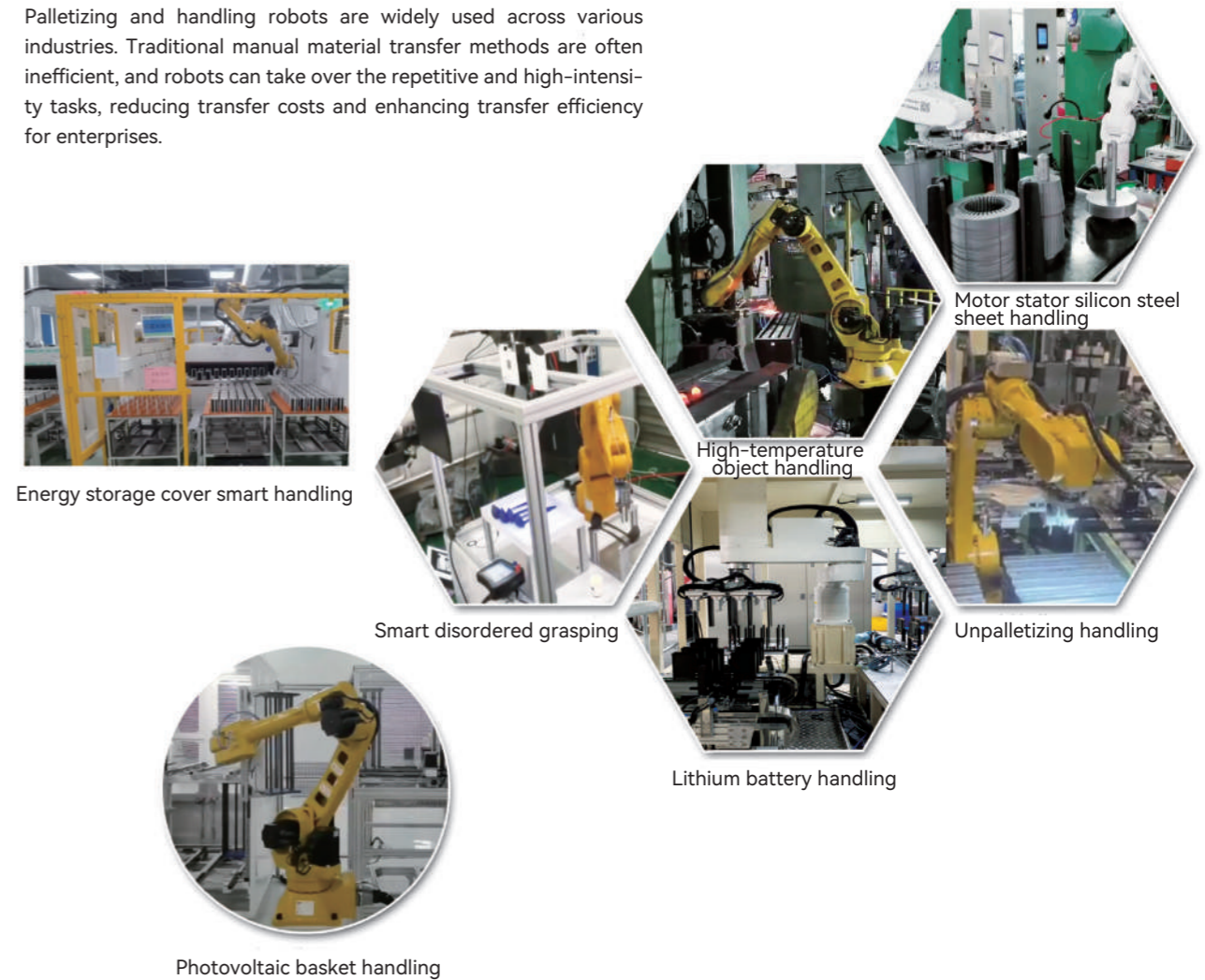
Machine Loading and Unloading

Industrial robot loading and unloading applications are characterized by high-precision positioning, high stability, high flexibility, and continuous operation. Equipped with force-assisted devices like torque sensors and vision positioning systems, they can fulfill complex loading and unloading requirements.



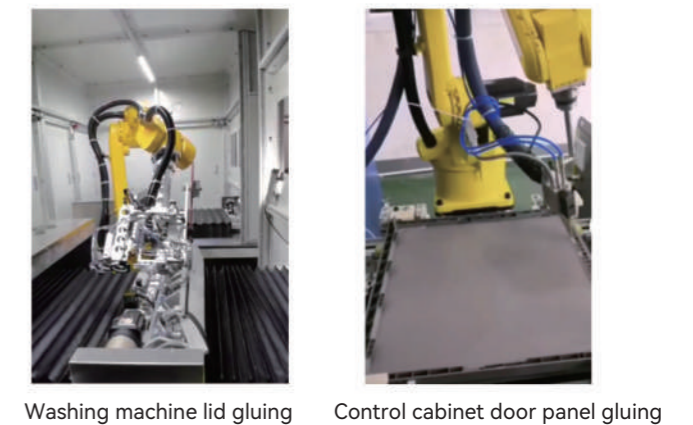
Material Handling

Palletizing and handling robots are widely used across various industries. Traditional manual material transfer methods are often inefficient, and robots can take over the repetitive and high-intensity tasks, reducing transfer costs and enhancing transfer efficiency for enterprises.



Gluing

Our proprietary offline programming software is capable of automatically creating robot paths and trajectories for intricate continuous surfaces. Coupled with advanced motion control technology, it provides swift responses, perfectly catering to the demands of precision gluing applications.



Polishing

Polishing applications are characterized by difficult programming, high-frequency vibrations, and constant torque output. We have independently developed offline programming software and developed a force control process package to control the constant pressure during the trajectory operation and customized mechanical structures to solve the difficulties in polishing applications.



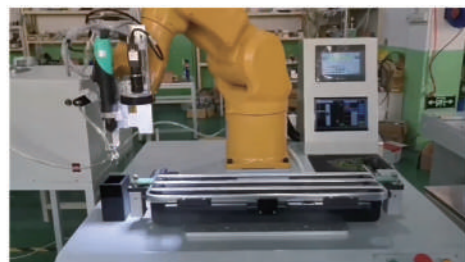
Deburring of castings



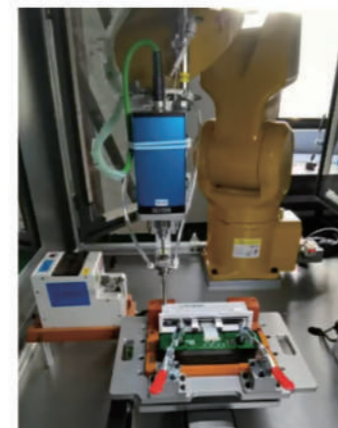
Polishing

Screw Fastening

Equipped with a screw fastening process package, it features torque feedback, multi-stage torque control, and detection functions for abnormal situations such as missed screws, floating, and slipping teeth, meeting customer needs.



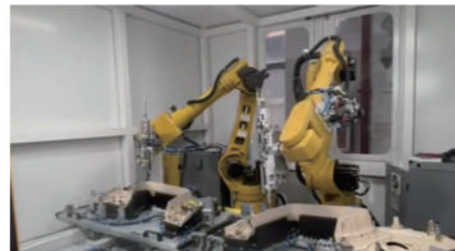
TKB060 Vision-guided screw fastening



C-side of a laptop screw fastening



TKB070 screw fastening



Household appliances screw fastening

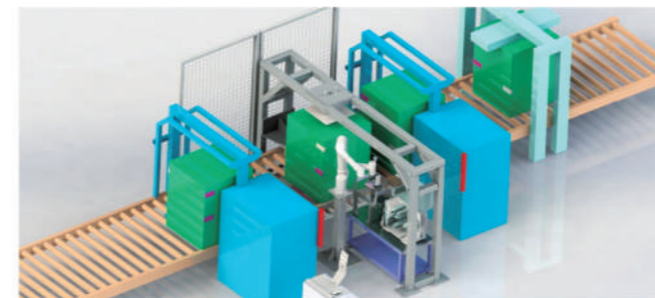
Collaborative Robots

Collaborative robots represent the next generation of industrial automation, engineered to collaborate seamlessly with human workers. Our company is dedicated to advancing the field of collaborative robotics through focused research, development, and implementation. We are committed to delivering top-tier solutions for welding automation, aiding in the modernization and transformation of the manufacturing sector.

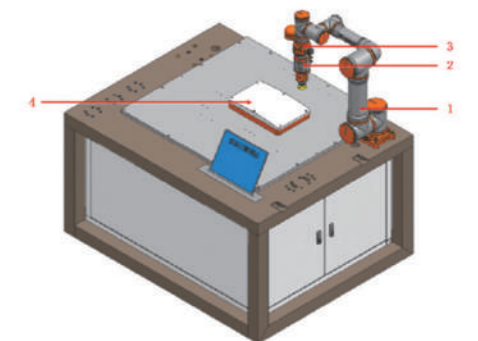
Leveraging our team of expert engineers, we are equipped to offer comprehensive technical solutions tailored to our clients' needs. We are well-prepared to swiftly deliver practical automation solutions that align with the principles of Industry 4.0, ensuring that our customers can benefit from the latest advancements in smart manufacturing.



Automatic coffee latte art



Automatic labeling machine



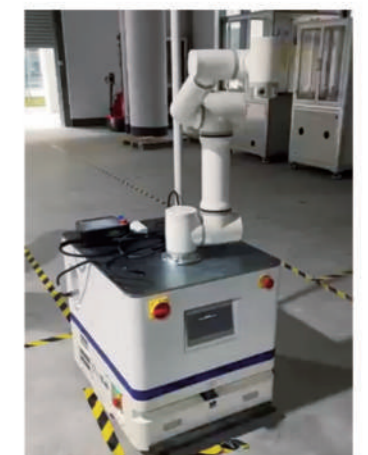
Surface polishing



Light bulb picking



Household appliance screw fastening

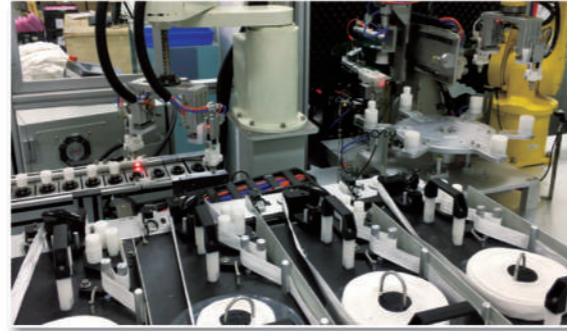


Laser navigation composite robot

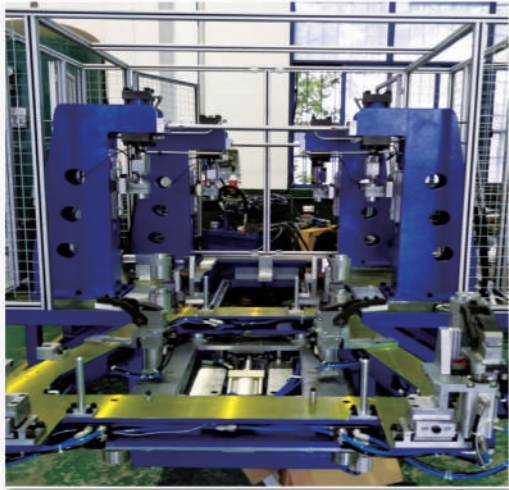
Other Application Scenarios



Emergency Handling in the 3C Industry
Intelligent Data Center



LED Assembly in the Lighting Industry



Automobile Front Beam Press
Equipment Production Line



Laser Cutting



Unmanned Factory of a Top 500 Global
Environmental Protection Enterprise



Educational Demonstration Workstation