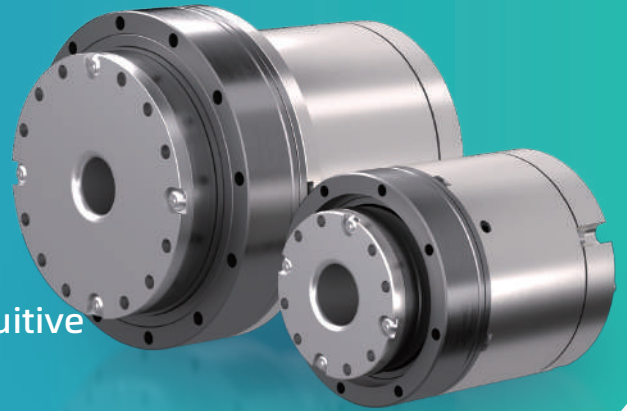


RB200 Series Rotary Joint Module



Light & Mighty | Strong & Flexible | Easy & Intuitive

Lightweight modular design
High-precision & performance

Compact with high torque
Low-cost & heat generation

The RB200 series rotary joint module showcases our dedication to innovation by integrating essential components such as a drive, dual hollow encoders, a frameless motor, a harmonic reducer, and sensors into a compact body. Through focused development, we've made strides in areas like power density and torque performance, dual hollow encoders, torque control, and load inertia identification. This effort has led to the creation of a product series that features compact modular design, and low cost with and high performance, aiming to simplify the robot development process and enhance the usability of automation equipment. Our goal is to provide a practical, all-in-one solution that makes the journey towards automation a bit smoother for our customers.



Naming Rules:

RB200 - G 70 I - R40 30 - 100 A S 1 E										
1	2	3	4	5	6	7	8	9	10	11
1 Product Series RB200 Series	2 Voltage Level E:DC24V G:DC48V	3 Max. Outer Diameter 70: 70mm		4 Structure I: Straight F: Corner		5 Motor Power R40: 400W		6 Rated Speed 30: 3000rpm		7 Harmonic Reducer 100: 100 speed ratio
8 Output-end Encoder D: Single-turn absolute type DM: Multi-turn absolute type N: None		9 Brake 1: Without brake 2: With brake		10 Motor-end Encoder D: Single-turn absolute type DM: Multi-turn absolute type N: None		11 Communication C: CANopen E: EtherCAT				

Specifications:

Specification	单位	RB200- G5211	RB200- G7014	RB200- G8017	RB200- G9020	RB200- G11025	RB200- G14232	RB200- G17040
Performance Specification								
Rated Voltage	V	48	48	48	48	48	48	48
Rated power	W	31	100	180	380	650	1000	1000
Rated current	A	1	2.6	6.3	10	13.5	22	25
Rated torque	N.m	7	10	31	52	87	178	294
Peak torque	N.m	13	70	149	192	361	892	1191
Rated speed	rpm	30	30	30	30	30	25	20
Reducer Specification								
Type	/	Harmonic reducer						
Reducer	/	100 (50/80/120)	100 (50/80/120)	100 (50/80/120)	100 (50/80/120)	100 (50/80/120)	120 (50/80/100)	120 (50/80/100)
Backlash	arcsec	≤ 10	≤ 10	≤ 10	≤ 10	≤ 10	≤ 10	≤ 10
Dimensions								
Length	mm	65	88	97	100.5	119.5	118.5	140
Max. diameter	mm	52	70	80	90	110	142	170
Bore diameter	mm	7	18	18	18	18	20	20
Communication	/	CANopen / EtherCAT / Modbus						
Protection level	/	IP54						

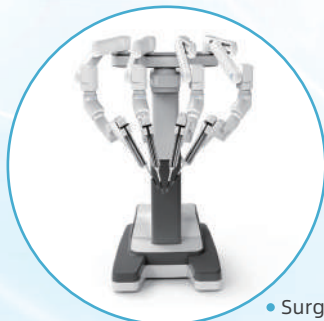
Application:



• Collaborative Robots



• Rehabilitation Robots



• Surgical Robots



• Humanoid Robots