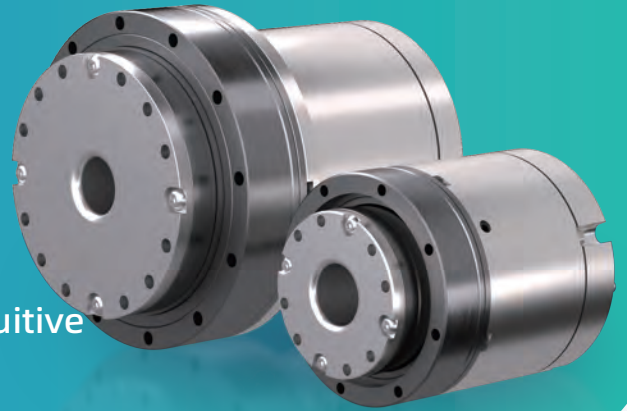


## RB200 Series Rotary Joint Module

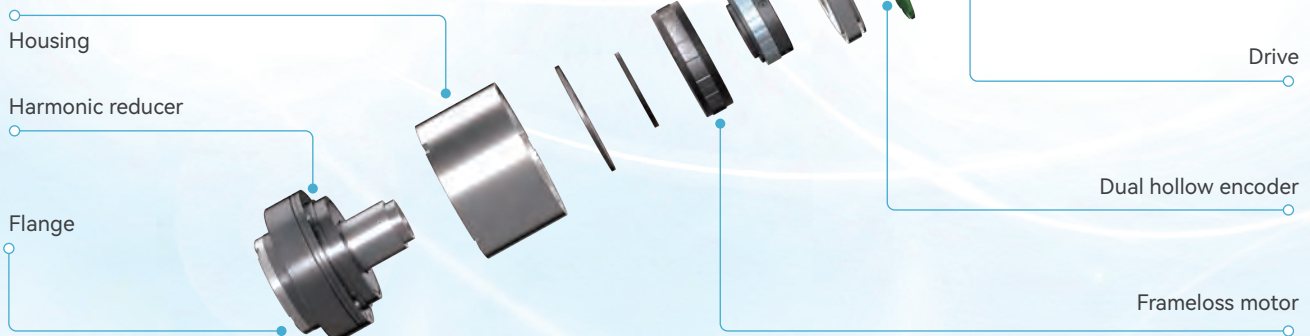


Light & Mighty | Strong & Flexible | Easy & Intuitive

Lightweight modular design  
High-precision & performance

Compact with high torque  
Low-cost & heat generation

The RB200 series rotary joint module showcases our dedication to innovation by integrating essential components such as a drive, dual hollow encoders, a frameless motor, a harmonic reducer, and sensors into a compact body. Through focused development, we've made strides in areas like power density and torque performance, dual hollow encoders, torque control, and load inertia identification. This effort has led to the creation of a product series that features compact modular design, and low cost with and high performance, aiming to simplify the robot development process and enhance the usability of automation equipment. Our goal is to provide a practical, all-in-one solution that makes the journey towards automation a bit smoother for our customers.



### Naming Rules:

**RB200 - G 70 I - R40 30 - 100 A S 1 E**

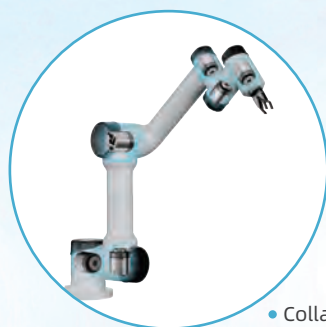
① ② ③ ④ ⑤ ⑥ ⑦ ⑧ ⑨ ⑩ ⑪

① <b>Product Series</b> RB200 Series	② <b>Voltage Level</b> E:DC24V G:DC48V	③ <b>Max. Outer Diameter</b> 70: 70mm	④ <b>Structure</b> I: Straight F: Corner
⑤ <b>Motor Power</b> R40: 400W	⑥ <b>Rated Speed</b> 30: 3000rpm	⑦ <b>Harmonic Reducer</b> 100: 100 speed ratio	<b>Motor-end Encoder</b> ⑧ D: Single-turn absolute type DM: Multi-turn absolute type N: None
<b>Output-end Encoder</b> ⑨ D: Single-turn absolute type DM: Multi-turn absolute type N: None	<b>Brake</b> ⑩ 1: Without brake 2: With brake	<b>Communication</b> ⑪ C: CANopen E: EtherCAT	

## Specifications:

Specification	Unit	RB200- G70I	RB200- G80I	RB200- G90I	RB200- G110I	RB200- G140I	RB200- G140I
<b>Performance Specification</b>							
Rated Voltage	V	48	48	48	48	48	48
Rated power	W	100	180	400	750	1000	1500
Rated current	A	2.7	4.9	11	20.6	26.7	40.5
Rated torque	N.m	32	57	127	239	572	1146
Peak torque	N.m	96	171	381	717	1717	3438
<b>Reducer Specification</b>							
Type	/	Harmonic reducer					
Reducer	/	100 (50/80/120)	100 (50/80/120)	100 (50/80/120)	100 (50/80/120)	120 (50/80/100)	120 (50/80/100)
Backlash	arcsec	≤ 10	≤ 10	≤ 10	≤ 10	≤ 10	≤ 10
<b>Dimensions</b>							
Length	mm	85	95	110	125	145	155
Max. diameter	mm	70	80	90	110	140	170
Bore diameter	mm	18	18	18	18	20	20
Communication	/	CANopen / EtherCAT / Modbus					
Protection level	/	IP54					

## Application:



• Collaborative Robots



• Rehabilitation Robots



• Surgical Robots



• Humanoid Robots