

VC-eNET User Manual

Thank you for purchasing the VC-eNET developed and produced by Suzhou VEICHI Electric Technology Co., Ltd. Before using our company's VC series PLC products, please read this manual carefully, so as to better grasp the characteristics of the products and correctly install and use them. More secure application and make full use of the rich functions of this product.

Tips:

Please read the operating instructions, precautions and cautions carefully before starting to use the product in order to reduce the risk of accidents. Personnel responsible for the installation and operation of the product must be strictly trained to comply with the safety codes of the relevant industry, strictly observe the relevant equipment precautions and special safety instructions provided in this manual, and carry out all operations of the equipment in accordance with the correct operating methods.

1 Interface description

1.1 Interface description

The appearance of VC-eNET interface and user terminal is shown in Figure 1-1.

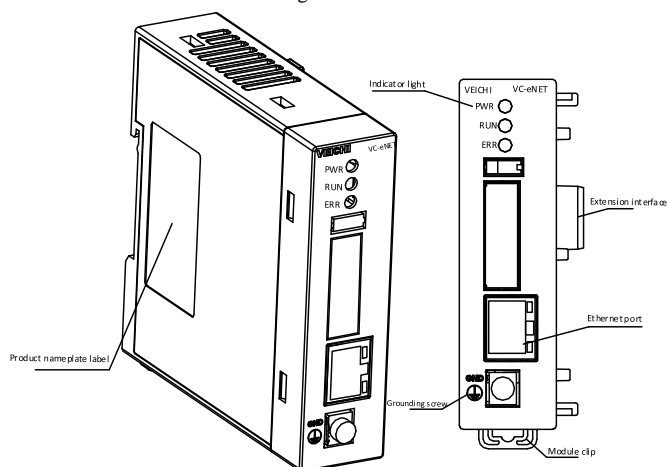


Figure 1-1 Appearance of the module interface

1.2 Access to the system

Through the expansion interface, the VC-eNET module can be connected with the VC series PLC main module. As shown in Figure 1-2

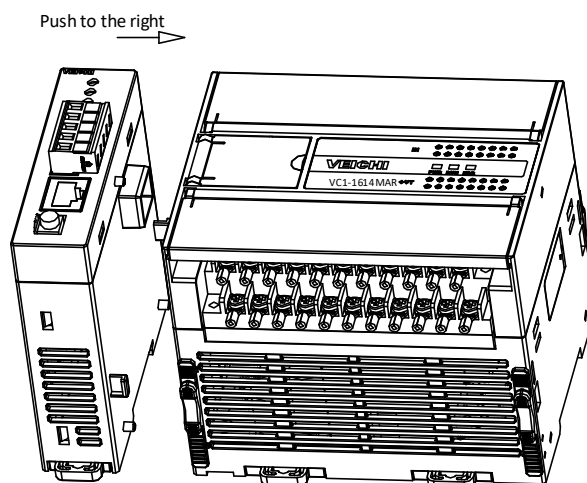


Figure 1-2 Schematic diagram of the connection between the communication module and the main module

1.3 Wiring Instructions

(1) Wire

VC-eNET mainly extends the main module of VC1 series to the left, and can provide one channel of Ethernet communication function. In order to ensure that your communication is normal, it is recommended to use shielded network cable for network data transmission, without short circuit,

dislocation and poor contact; The length of the cable should not exceed 100m, otherwise the signal will be attenuated and normal communication will be affected. The following specifications are recommended, and the network cables are shown in Table 1-1:

Project	Specification
Cable type	Flexible Crossover Cable, S-FTP, Category 5
Standards met	EIA/TIA568A, EN50173, ISO/IEC11801, EIA/TI Abulletin TSB, EIA/TIA SB40-A&TSB36
Conductor cross section	AWG26
Wire type	twisted pair
Pair	4

Table 1-1 Standard specifications of network cables



Figure 1-3: Shielded network cable

2 Instructions for use

2.1 Indicator light description

project	Instruction
Signal indicator	PWR power indicator: When the main module is correctly connected, the indicator remains on; RUN: Running indicator: the indicator flashes when the system connection is normal; ERR: Error indicator light: the light is on when the communication is abnormal;
Expansion module interface	Expansion module interface, does not support hot plug

3 Module Features

1. VC-eNET is mainly used for VC1 series main module to expand one channel of Ethernet communication port.
2. VC-eNET only supports slave station, and supports up to four master stations to communicate with the module.
3. As the left expansion communication module of VC1 series, the VC-eNET module can be connected to at most one module on the left of the PLC main unit.

4 Communication configuration

VC-eNET extended communication module parameter configuration needs to be configured in AutoStudio programming software. Such as IP address, subnet mask, gateway address, etc.

Programming software configuration tutorial

- 1) New project, in the Project manager→Communication config→Ethernet
Configure Ethernet as required. This example is the default IP address.

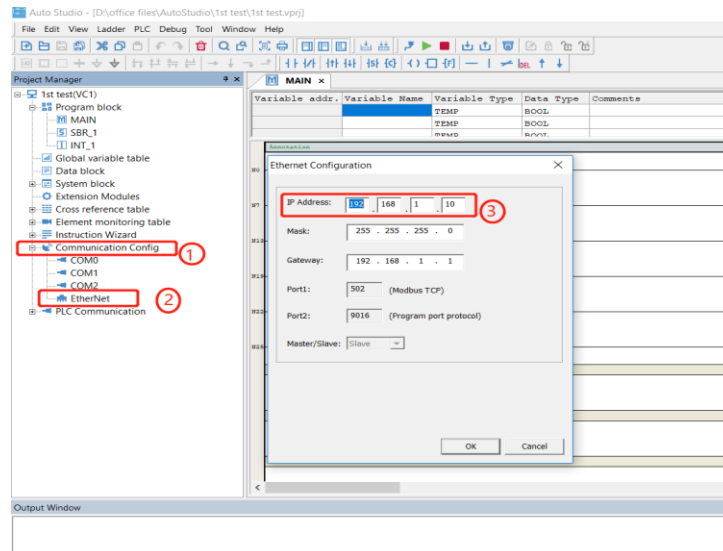


Figure 4-1 Ethernet Configuration

- 2) After clicking the configuration, click "OK" to complete the communication parameter configuration.
- 3) The VC-eNET extended Ethernet module is only a slave station, and the IP address can be configured according to the needs.

5 Installation

5.1 Dimensions

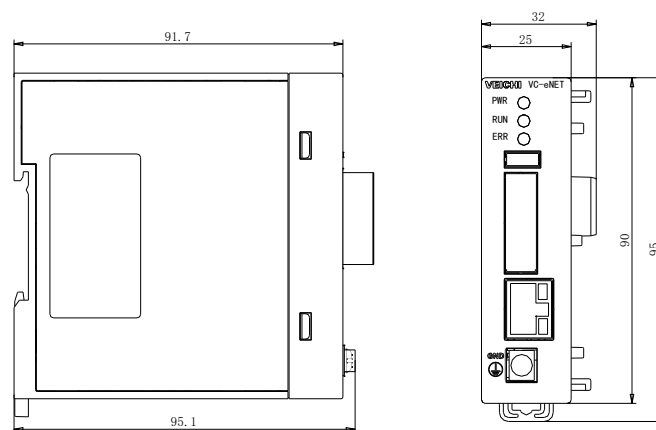


Figure 5-1 External dimensions and mounting hole size (unit: mm)

5.2 Installation method

The installation method is the same as that of the main module, please refer to "VC Series Programmable Controller User Manual" for details. The installation schematic is shown in Figure 5-2.

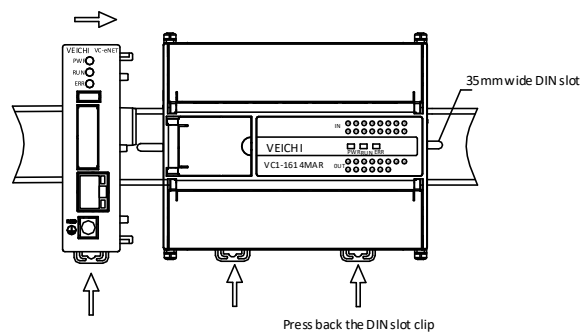


Figure 5-2 Using DIN slot to install and fix

6 Run Check

6.1 Routine Inspection

1. Check that the analog input wiring meets the requirements (see 1.3 Wiring Instructions).
2. Check whether the VC-eNET expansion interface is securely inserted into the expansion interface.
3. Check the application to ensure that the correct operating method and parameter range are selected in the application.
5. Set the VC main module to RUN state.

6.2 Troubleshooting

If VC-eNET does not operate normally, please check the following items.

- Check the communication wiring

Confirm that the wiring is correct, refer to 1.3 Cable Specifications;

- Check the status of the "PWR" indicator of this module

Steady on: The module is connected reliably;

Off: Module contact is abnormal;

User Notice

1. The warranty scope refers to the programmable controller body.
2. The warranty period is 18 months. If the product fails or is damaged during the warranty period under normal use, we will repair it free of charge.
3. The starting time of the warranty period is the date of manufacture and ex-factory of the product. The machine code is the only basis for judging the warranty period. Equipment without machine code will be treated as out-of-warranty.
4. Even within the warranty period, a certain repair fee will be charged in the following cases:
Machine failure caused by not operating in accordance with the user manual;
Machine damage caused by fire, flood, abnormal voltage, etc.;;
Damage caused by using the programmable controller for abnormal functions.
5. The service fee is calculated according to the actual cost. If there is another contract, the contract will be dealt with first.
6. Please be sure to keep this card and present it to the maintenance unit during the warranty period.
7. If you have any questions, you can contact the agent, or contact our company directly.

Suzhou VEICHI Electric Technology Co., Ltd.

Customer Service Center in China

address: No. 1000 Songjia Road, Wuzhong Economic and Technological Development Zone

Tel: 0512-66171988 Fax: 0512-6617-3610

Service Hotline: 400-600-0303 Website: www.veichi.com

Data version V1.0 Archive time 2021-07-30

Copyright, all rights reserved. Contents are subject to change without notice.

VEICHI Product warranty card

Customer information	Unit address:	
	Company name:	Contact:
		Contact number:
Product information	Product model:	
	Body barcode:	
	Agency name:	
Fault information	Repair time and content:	
	Repair man:	
Mailing address	Suzhou VEICHI Electric Technology Co., Ltd. address: No. 1000 Songjia Road, Wuzhong Economic and Technological Development Zone	

